



Auxiliary
contactor
BGF00

Product designation

Product type designation

Contact characteristics

Number of poles	Nr.	4
Rated insulation voltage U_i IEC/EN	V	690
Rated impulse withstand voltage U_{imp}	kV	6

Operational frequency

min	Hz	25
max	Hz	400

IEC Conventional free air thermal current I_{th}	A	10
Short-time allowable current for 10s (IEC/EN60947-1)	A	0

Protection fuse

gG (IEC)	A	16
----------	---	----

Tightening torque for terminals

min	Nm	0.8
max	Nm	1
min	lbin	9
max	lbin	9

Tightening torque for coil terminal

min	Nm	0.8
max	Nm	1
min	lbin	9
max	lbin	9

Max number of wires simultaneously connectable	Nr.	2
--	-----	---

Conductor section

AWG/Kcmil

max	12
-----	----

Flexible w/o lug conductor section

min	mm ²	0.75
max	mm ²	2.5

Flexible c/w lug conductor section

min	mm ²	1.5
max	mm ²	2.5

Flexible with insulated spade lug conductor section

min	mm ²	1.5
max	mm ²	2.5

Power terminal protection according to IEC/EN 60529	IP20 when wired
---	-----------------

Mechanical features

Operating position

normal allowable	Vertical plan ±30°
---------------------	-----------------------

Fixing	Screw / DIN rail 35mm
--------	--------------------------

Weight	g	180
--------	---	-----

Conductor section

AWG/kcmil conductor section

max 12

Auxiliary contact characteristics

Thermal current I_{th} A 10

IEC/EN 60947-5-1 designation A600 - Q600

Operating current AC15

230V	A	3
400V	A	1.9
500V	A	1.4

Operating current DC12

110V	A	2.9
------	---	-----

Operating current DC13

24V	A	2.9
48V	A	1.4
60V	A	1.1
125V	A	0.3
220V	A	0.1
600V	A	0.6

Operations

Mechanical life cycles 20000000

Safety related data

Performance level B10d according to EN/ISO 13489-1

mechanical load cycles 20000000

Mirror contacts according to IEC/EN 60947-4-1 YES

EMC compatibility yes

AC coil operating

Rated AC voltage at 50/60Hz V 110

AC operating voltage

of 50/60Hz coil powered at 50Hz
pick-up

min	%Us	75
max	%Us	115

drop-out

min	%Us	20
max	%Us	55

of 50/60Hz coil powered at 60Hz
pick-up

min	%Us	80
max	%Us	115

drop-out

min	%Us	20
max	%Us	55

AC average coil consumption at 20°C

of 50/60Hz coil powered at 50Hz

in-rush	VA	30
holding	VA	4

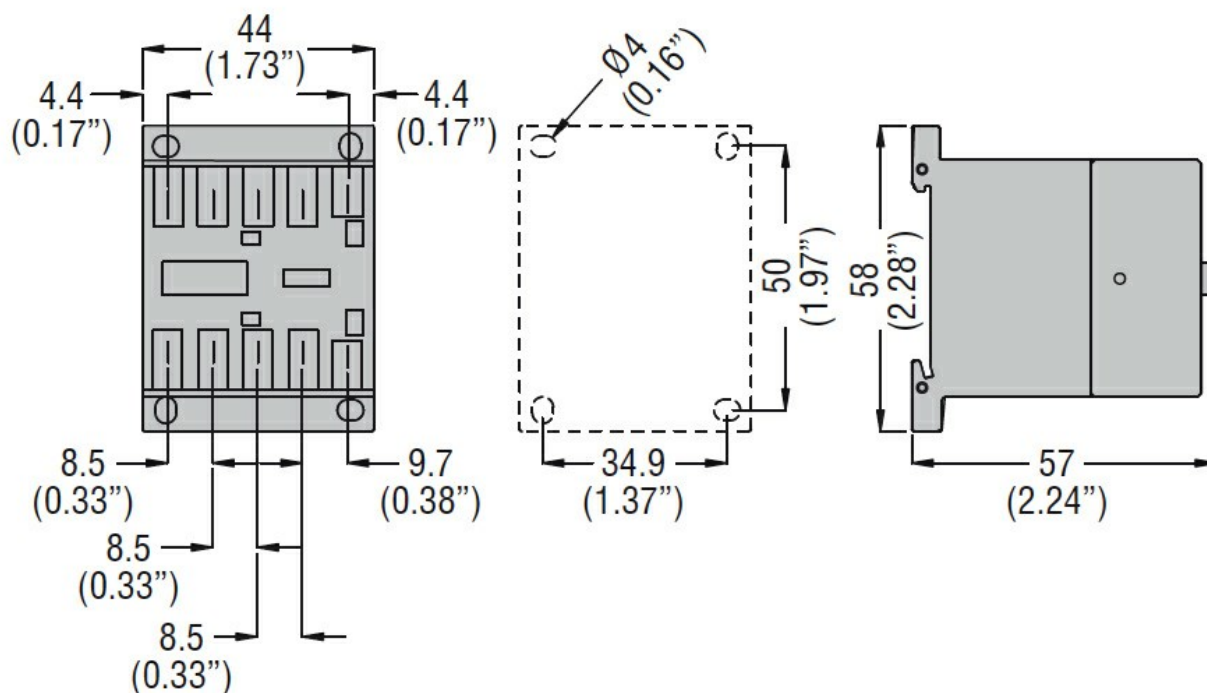
of 50/60Hz coil powered at 60Hz

in-rush	VA	25
holding	VA	3

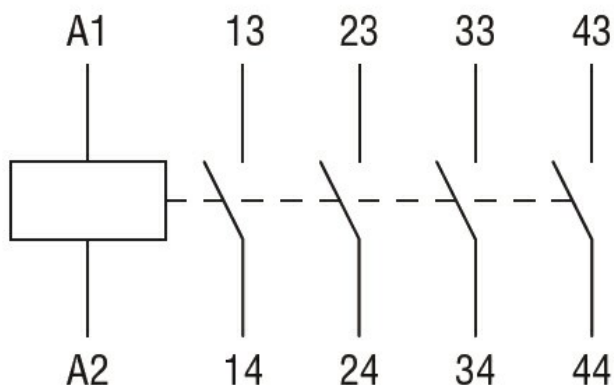
of 60Hz coil powered at 60Hz

in-rush	VA	30
holding	VA	4

Dissipation at holding ≤20°C 50Hz			W	0.95
Max cycles frequency				
Mechanical operation			cycles/h	3600
Operating times				
Average time for Us control				
in AC				
Closing NO			min	ms 12
			max	ms 21
Opening NO			min	ms 9
			max	ms 18
Closing NC			min	ms 17
			max	ms 26
Opening NC			min	ms 7
			max	ms 17
in DC				
Closing NO			min	ms 18
			max	ms 25
Opening NO			min	ms 2
			max	ms 3
Closing NC			min	ms 3
			max	ms 5
Opening NC			min	ms 11
			max	ms 17
UL technical data				
Contact rating of auxiliary contacts according to UL			A600 - Q600	
Ambient conditions				
Temperature				
Operating temperature			min	°C -50
			max	°C +70
Storage temperature			min	°C -60
			max	°C +80
Max altitude			m	3000
Resistance & Protection				
Pollution degree			3	
Dimensions				



Wiring diagrams



Certifications and compliance

Compliance

CSA C22.2 n° 60947-1
CSA C22.2 n° 60947-5-1
IEC/EN 60947-1
IEC/EN 60947-5-1
UL 60947-1
UL 60947-5-1

Certificates

CCC
cULus
EAC

ETIM classification

ETIM 8.0

EC000196 -
Contactor relay