



Product designation

Product type designation

Auxiliary
contactor
BF00

Contact characteristics

Number of poles	Nr.	4
Rated insulation voltage U_i IEC/EN	V	690
Rated impulse withstand voltage U_{imp}	kV	6
Operational frequency	min Hz	25
	max Hz	400
IEC Conventional free air thermal current I_{th}	A	10
Short-time allowable current for 10s (IEC/EN60947-1)	A	0
Protection fuse	gG (IEC)	A 25
Tightening torque for terminals	min Nm	1.5
	max Nm	1.8
	min lbin	1.1
	max lbin	1.5
Tightening torque for coil terminal	min Nm	0.8
	max Nm	1
	min lbin	0.8
	max lbin	0.74
Max number of wires simultaneously connectable	Nr.	2

Conductor section

AWG/Kcmil

	max	10
Flexible w/o lug conductor section	min mm^2	1
	max mm^2	6
Flexible c/w lug conductor section	min mm^2	1
	max mm^2	4
Flexible with insulated spade lug conductor section	min mm^2	1
	max mm^2	4

Power terminal protection according to IEC/EN 60529

IP20 when wired

Mechanical features

Operating position

normal
allowable

Vertical plan
 $\pm 30^\circ$

Fixing

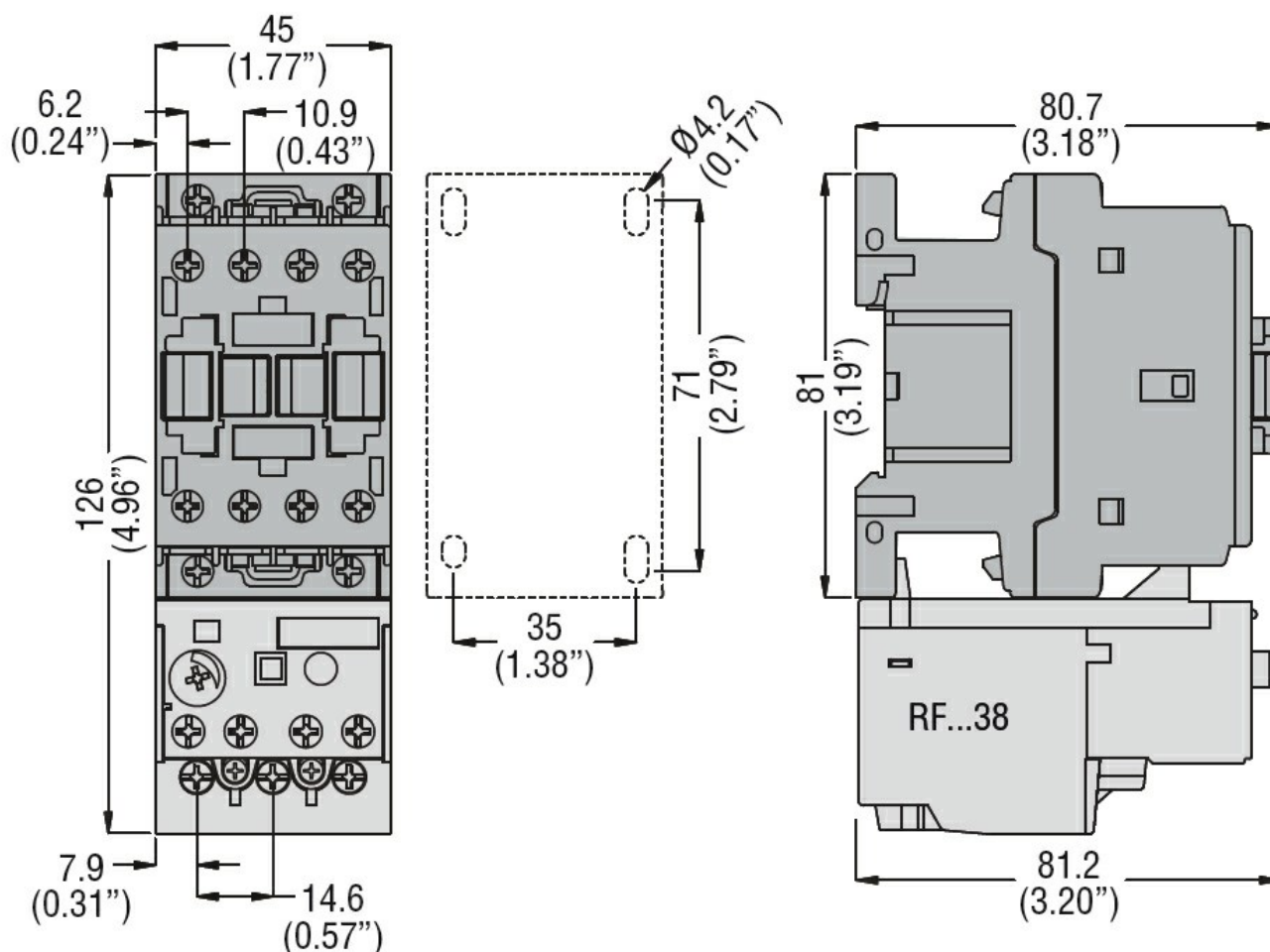
Screw / DIN rail
35mm

Weight

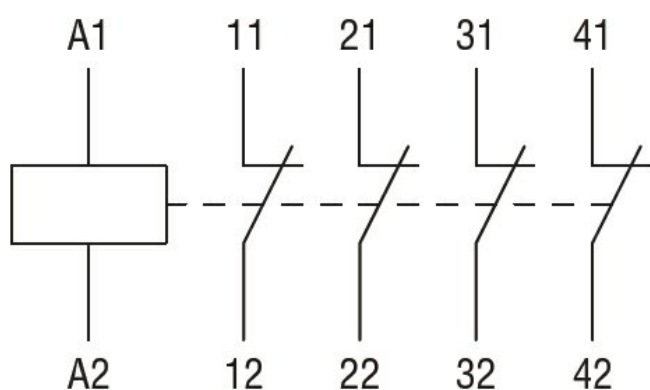
g 366

Conductor section	AWG/kcmil conductor section		
	max	10	
Auxiliary contact characteristics			
Thermal current I _{th}	A	10	
IEC/EN 60947-5-1 designation	A600 - P600		
Operating current AC15	230V	A	3
	400V	A	1.9
	500V	A	1.4
Operating current DC12	110V	A	5.7
Operating current DC13	24V	A	5.7
	48V	A	2.9
	60V	A	2.3
	110V	A	1.25
	125V	A	1.1
	220V	A	0.55
	600V	A	0.2
Operations			
Mechanical life	cycles	20000000	
Safety related data			
Performance level B10d according to EN/ISO 13489-1	mechanical load	cycles	20000000
Mirror contacts according to IEC/EN 60947-4-1	YES		
EMC compatibility	yes		
AC coil operating			
Rated AC voltage at 50/60Hz	V	400	
AC operating voltage			
of 50/60Hz coil powered at 50Hz			
pick-up	min	%Us	80
	max	%Us	110
drop-out	min	%Us	20
	max	%Us	55
of 50/60Hz coil powered at 60Hz			
pick-up	min	%Us	80
	max	%Us	110
drop-out	min	%Us	20
	max	%Us	55
AC average coil consumption at 20°C			
of 50/60Hz coil powered at 50Hz	in-rush	VA	75
	holding	VA	9
of 50/60Hz coil powered at 60Hz	in-rush	VA	70
	holding	VA	6.5
of 60Hz coil powered at 60Hz	in-rush	VA	75

		holding	VA	9
Dissipation at holding $\leq 20^{\circ}\text{C}$ 50Hz			W	2.5
Max cycles frequency				
Mechanical operation			cycles/h	3600
Operating times				
Average time for U_s control				
in AC				
	Closing NO			
		min	ms	8
		max	ms	24
	Opening NO			
		min	ms	10
		max	ms	20
	Closing NC			
		min	ms	9
		max	ms	25
	Opening NC			
		min	ms	9
		max	ms	15
UL technical data				
General USE				
	Auxiliary contacts			
		AC current	A	10
Contact rating of auxiliary contacts according to UL				A600 - P600
Ambient conditions				
Temperature				
	Operating temperature			
		min	$^{\circ}\text{C}$	-50
		max	$^{\circ}\text{C}$	70
	Storage temperature			
		min	$^{\circ}\text{C}$	-60
		max	$^{\circ}\text{C}$	80
Max altitude			m	3000
Resistance & Protection				
Pollution degree				3
Dimensions				



Wiring diagrams



Certifications and compliance

Compliance

CSA C22.2 n° 60947-1
CSA C22.2 n° 60947-5-1
IEC/EN 60947-1
IEC/EN 60947-5-1
UL 60947-1
UL 60947-5-1

Certificates

CCC
cULus
EAC

ETIM classification

ETIM 8.0

EC000196 -
Contactor relay