



Product designation

Product type designation

Auxiliary
contactor
BF00

Contact characteristics

Number of poles	Nr.	4
Rated insulation voltage U_i IEC/EN	V	690
Rated impulse withstand voltage U_{imp}	kV	6
Operational frequency	min Hz	25
	max Hz	400
IEC Conventional free air thermal current I_{th}	A	10
Operational current I_e	AC-1 ($\leq 55^\circ\text{C}$) A	0
Short-time allowable current for 10s (IEC/EN60947-1)	A	0
Protection fuse	gG (IEC) A	25
Tightening torque for terminals	min Nm	1.5
	max Nm	1.8
	min lbin	1.1
	max lbin	1.5
Tightening torque for coil terminal	min Nm	0.8
	max Nm	1
	min lbin	0.8
	max lbin	0.74
Max number of wires simultaneously connectable	Nr.	2
Conductor section		
AWG/Kcmil	max	10
Flexible w/o lug conductor section	min mm^2	1
	max mm^2	6
Flexible c/w lug conductor section	min mm^2	1
	max mm^2	4
Flexible with insulated spade lug conductor section	min mm^2	1
	max mm^2	4
Power terminal protection according to IEC/EN 60529		IP20 when wired

Mechanical features

Operating position

normal
allowable

Vertical plan
 $\pm 30^\circ$

Fixing	Screw / DIN rail 35mm		
Weight	g	360	
Conductor section	AWG/kcmil conductor section		
	max	10	
Auxiliary contact characteristics			
Thermal current I _{th}	A	10	
IEC/EN 60947-5-1 designation	A600 - P600		
Operating current AC15	230V	A	3
	400V	A	1.9
	500V	A	1.4
Operating current DC12	110V	A	5.7
Operating current DC13	24V	A	5.7
	48V	A	2.9
	60V	A	2.3
	110V	A	1.25
	125V	A	1.1
	220V	A	0.55
	600V	A	0.2
Operations			
Mechanical life	cycles	20000000	
Safety related data			
Performance level B10d according to EN/ISO 13489-1	mechanical load	cycles	20000000
Mirror contats according to IEC/EN 609474-4-1	YES		
EMC compatibility	yes		
AC coil operating			
Rated AC voltage at 60Hz	V	24	
AC operating voltage	of 60Hz coil powered at 60Hz		
	pick-up		
	min	%Us	80
	max	%Us	110
	drop-out		
	min	%Us	20
	max	%Us	55
AC average coil consumption at 20°C	of 60Hz coil powered at 60Hz		
	in-rush	VA	75
	holding	VA	9
Dissipation at holding ≤20°C 50Hz	W	2.5	
Max cycles frequency			
Mechanical operation	cycles/h	3600	
Operating times			
Average time for U _s control	in AC		
	Closing NO		
	min	ms	8
	max	ms	24

Opening NO

min	ms	10
max	ms	20

Closing NC

min	ms	14
max	ms	28

Opening NC

min	ms	7
max	ms	18

UL technical data

General USE

Auxiliary contacts

AC current A 10

Contact rating of auxiliary contacts according to UL

A600 - P600

Ambient conditions

Temperature

Operating temperature

min	°C	-50
max	°C	70

Storage temperature

min	°C	-60
max	°C	80

Max altitude

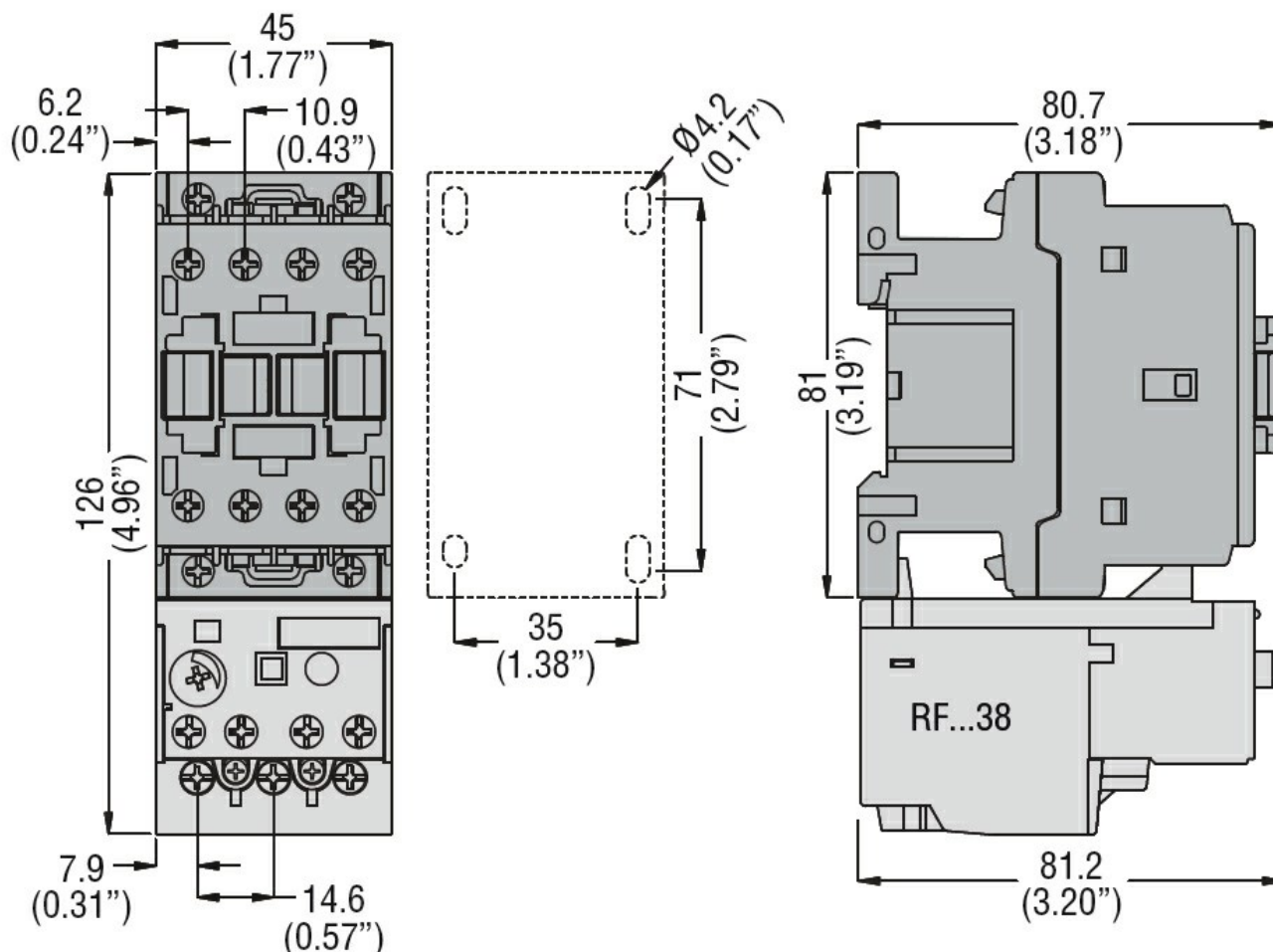
m 3000

Resistance & Protection

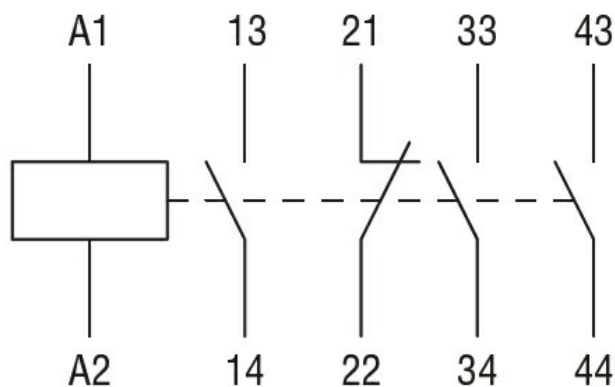
Pollution degree

3

Dimensions



Wiring diagrams



Certifications and compliance

Compliance

CSA C22.2 n° 60947-1

CSA C22.2 n° 60947-5-1

IEC/EN 60947-1

IEC/EN 60947-5-1

UL 60947-1

UL 60947-5-1

Certificates

CCC

cULus

EAC

ETIM classification

ETIM 8.0

EC000196 -
Contactor relay