



Product designation

Product type designation

Auxiliary  
contactor  
BF00

### Contact characteristics

Number of poles	Nr.	4
Rated insulation voltage $U_i$ IEC/EN	V	690
Rated impulse withstand voltage $U_{imp}$	kV	6
Operational frequency	min Hz	25
	max Hz	400
IEC Conventional free air thermal current $I_{th}$	A	10
Operational current $I_e$	AC-1 ( $\leq 55^\circ\text{C}$ ) A	0
Short-time allowable current for 10s (IEC/EN60947-1)	A	0
Protection fuse	gG (IEC) A	25
Tightening torque for terminals	min Nm	1.5
	max Nm	1.8
	min lbin	1.1
	max lbin	1.5
Tightening torque for coil terminal	min Nm	0.8
	max Nm	1
	min lbin	0.8
	max lbin	0.74
Max number of wires simultaneously connectable	Nr.	2
Conductor section		
AWG/Kcmil	max	10
Flexible w/o lug conductor section	min $\text{mm}^2$	1
	max $\text{mm}^2$	6
Flexible c/w lug conductor section	min $\text{mm}^2$	1
	max $\text{mm}^2$	4
Flexible with insulated spade lug conductor section	min $\text{mm}^2$	1
	max $\text{mm}^2$	4
Power terminal protection according to IEC/EN 60529		IP20 when wired

### Mechanical features

Operating position

normal  
allowable

Vertical plan  
 $\pm 30^\circ$

Fixing	Screw / DIN rail 35mm		
Weight	g	367	
Conductor section	AWG/kcmil conductor section		
	max	10	
Auxiliary contact characteristics			
Thermal current I <sub>th</sub>	A	10	
IEC/EN 60947-5-1 designation	A600 - P600		
Operating current AC15	230V	A	3
	400V	A	1.9
	500V	A	1.4
Operating current DC12	110V	A	5.7
Operating current DC13	24V	A	5.7
	48V	A	2.9
	60V	A	2.3
	110V	A	1.25
	125V	A	1.1
	220V	A	0.55
	600V	A	0.2
Operations			
Mechanical life	cycles	20000000	
Safety related data			
Performance level B10d according to EN/ISO 13489-1	mechanical load	cycles	20000000
Mirror contacts according to IEC/EN 60947-4-1	YES		
EMC compatibility	yes		
AC coil operating			
Rated AC voltage at 50/60Hz	V	48	
AC operating voltage	of 50/60Hz coil powered at 50Hz		
	pick-up	min	%U <sub>s</sub> 80
		max	%U <sub>s</sub> 110
	drop-out	min	%U <sub>s</sub> 20
		max	%U <sub>s</sub> 55
	of 50/60Hz coil powered at 60Hz		
	pick-up	min	%U <sub>s</sub> 80
		max	%U <sub>s</sub> 110
	drop-out	min	%U <sub>s</sub> 20
		max	%U <sub>s</sub> 55
AC average coil consumption at 20°C	of 50/60Hz coil powered at 50Hz		
	in-rush	VA	75
	holding	VA	9
	of 50/60Hz coil powered at 60Hz		
	in-rush	VA	70
	holding	VA	6.5

of 60Hz coil powered at 60Hz

	in-rush	VA	75
	holding	VA	9
Dissipation at holding ≤20°C 50Hz		W	2.5

### Max cycles frequency

Mechanical operation	cycles/h	3600
----------------------	----------	------

### Operating times

Average time for Us control

in AC

Closing NO

min	ms	8
max	ms	24

Opening NO

min	ms	10
max	ms	20

Closing NC

min	ms	17
max	ms	30

Opening NC

min	ms	7
max	ms	18

### UL technical data

General USE

Auxiliary contacts

AC current	A	10
------------	---	----

Contact rating of auxiliary contacts according to UL	A600 - P600
--	-------------

### Ambient conditions

Temperature

Operating temperature

min	°C	-50
max	°C	70

Storage temperature

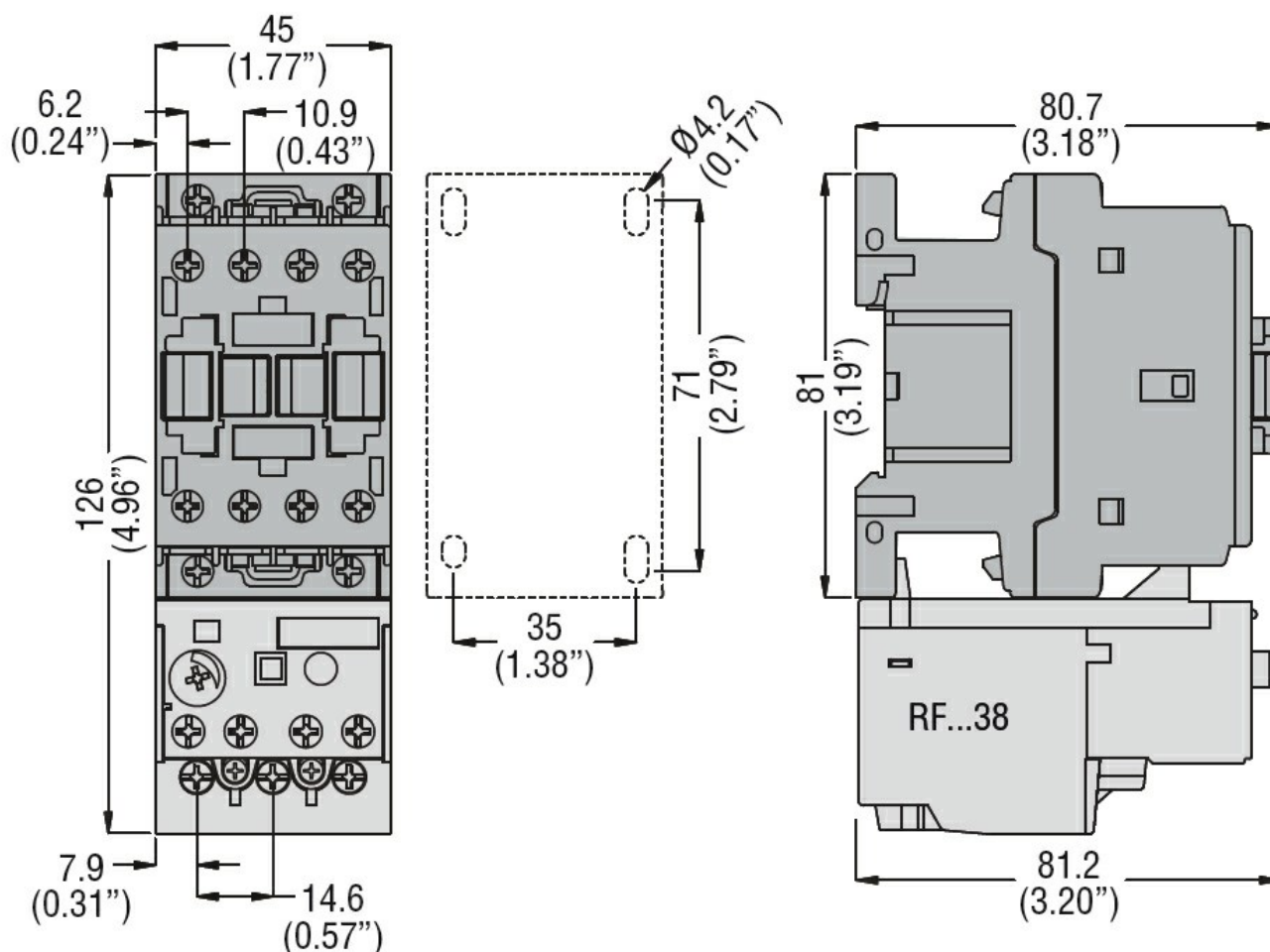
min	°C	-60
max	°C	80

Max altitude	m	3000
--------------	---	------

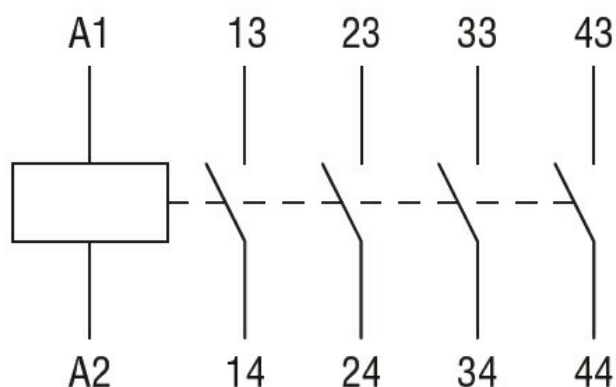
### Resistance & Protection

Pollution degree	3
------------------	---

### Dimensions



## Wiring diagrams



## Certifications and compliance

### Compliance

CSA C22.2 n° 60947-1  
CSA C22.2 n° 60947-5-1  
IEC/EN 60947-1  
IEC/EN 60947-5-1  
UL 60947-1  
UL 60947-5-1

### Certificates

CCC  
cULus  
EAC

ETIM classification

ETIM 8.0

EC000196 -  
Contactor relay