



Product designation

Product type designation

Auxiliary  
contactor  
BF00

### Contact characteristics

Number of poles	Nr.	4
Rated insulation voltage $U_i$ IEC/EN	V	690
Rated impulse withstand voltage $U_{imp}$	kV	6
Operational frequency	min Hz	25
	max Hz	400
IEC Conventional free air thermal current $I_{th}$	A	10
Operational current $I_e$	AC-1 ( $\leq 55^\circ\text{C}$ ) A	0
Short-time allowable current for 10s (IEC/EN60947-1)	A	0
Protection fuse	gG (IEC) A	25
Tightening torque for terminals	min Nm	1.5
	max Nm	1.8
	min lbin	1.1
	max lbin	1.5
Tightening torque for coil terminal	min Nm	0.8
	max Nm	1
	min lbin	0.8
	max lbin	0.74
Max number of wires simultaneously connectable	Nr.	2
Conductor section		
AWG/Kcmil	max	10
Flexible w/o lug conductor section	min $\text{mm}^2$	1
	max $\text{mm}^2$	6
Flexible c/w lug conductor section	min $\text{mm}^2$	1
	max $\text{mm}^2$	4
Flexible with insulated spade lug conductor section	min $\text{mm}^2$	1
	max $\text{mm}^2$	4
Power terminal protection according to IEC/EN 60529		IP20 when wired

### Mechanical features

Operating position

normal  
allowable

Vertical plan  
 $\pm 30^\circ$

Fixing	Screw / DIN rail 35mm		
Weight	g	496	
Conductor section	AWG/kcmil conductor section		
	max	10	
Auxiliary contact characteristics			
Thermal current I <sub>th</sub>	A	10	
IEC/EN 60947-5-1 designation	A600 - P600		
Operating current AC15	230V	A	3
	400V	A	1.9
	500V	A	1.4
Operating current DC12	110V	A	5.7
Operating current DC13	24V	A	5.7
	48V	A	2.9
	60V	A	2.3
	110V	A	1.25
	125V	A	1.1
	220V	A	0.55
	600V	A	0.2
Operations			
Mechanical life	cycles	20000000	
Safety related data			
Performance level B10d according to EN/ISO 13489-1	mechanical load	cycles	20000000
Mirror contacts according to IEC/EN 60947-4-1	YES		
EMC compatibility	yes		
DC coil operating			
DC rated control voltage	V	48	
DC operating voltage			
pick-up	min	%U <sub>s</sub>	80
	max	%U <sub>s</sub>	110
drop-out	min	%U <sub>s</sub>	10
	max	%U <sub>s</sub>	40
Average coil consumption ≤20°C	in-rush	W	2.4
	holding	W	2.4
Max cycles frequency			
Mechanical operation	cycles/h	3600	
Operating times			
Average time for U <sub>s</sub> control			
in DC			
Closing NO	min	ms	54
	max	ms	66
Opening NO	min	ms	14
	max	ms	17

Closing NC

min	ms	24
max	ms	30

Opening NC

min	ms	67
max	ms	81

#### UL technical data

General USE

Auxiliary contacts

AC current A 10

Contact rating of auxiliary contacts according to UL

A600 - P600

#### Ambient conditions

Temperature

Operating temperature

min	°C	-50
max	°C	70

Storage temperature

min	°C	-60
max	°C	80

Max altitude

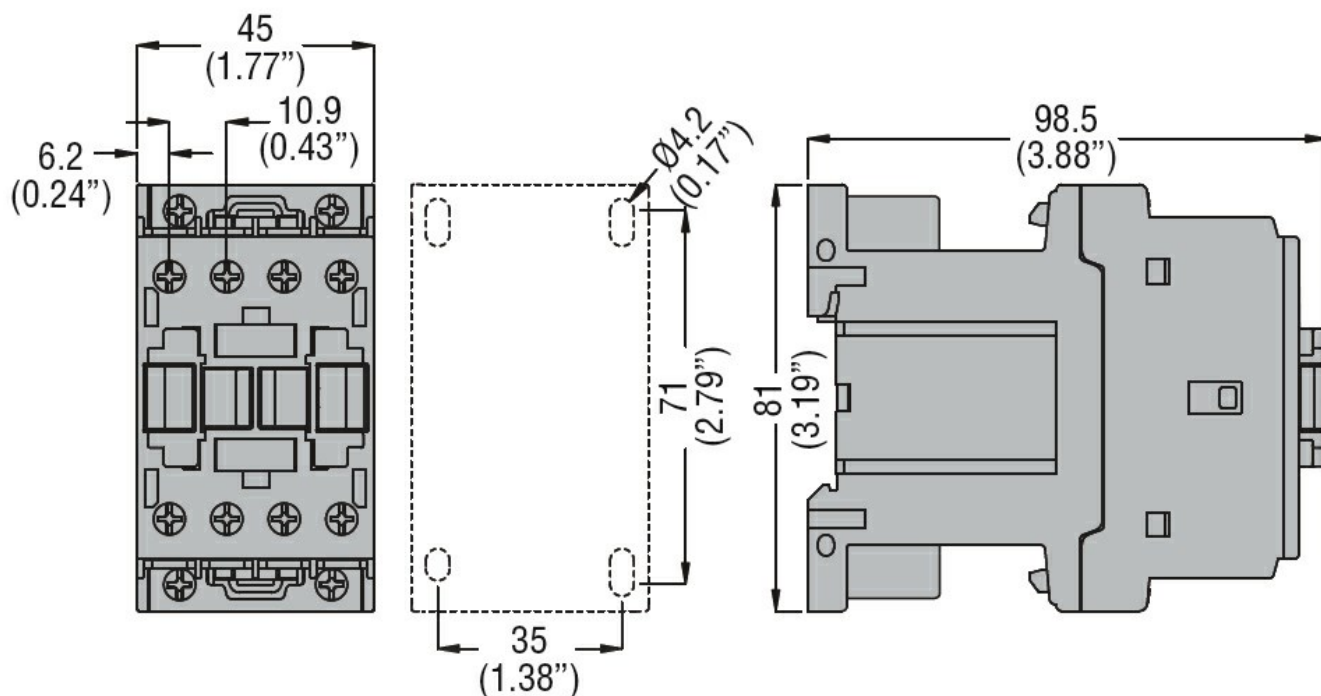
m 3000

#### Resistance & Protection

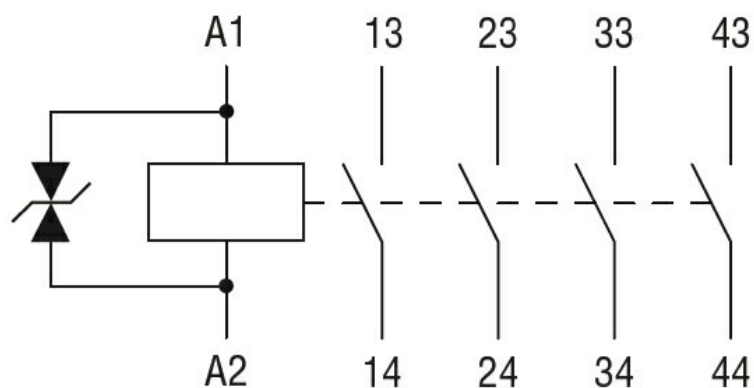
Pollution degree

3

#### Dimensions



#### Wiring diagrams



## Certifications and compliance

### Compliance

CSA C22.2 n° 60947-1  
CSA C22.2 n° 60947-5-1  
IEC/EN 60947-1  
IEC/EN 60947-5-1  
UL 60947-1  
UL 60947-5-1

### Certificates

CCC  
cULus  
EAC

## ETIM classification

ETIM 8.0

EC000196 -  
Contactor relay