



Product designation

Power contactor

Product type designation

BF32

Contact characteristics

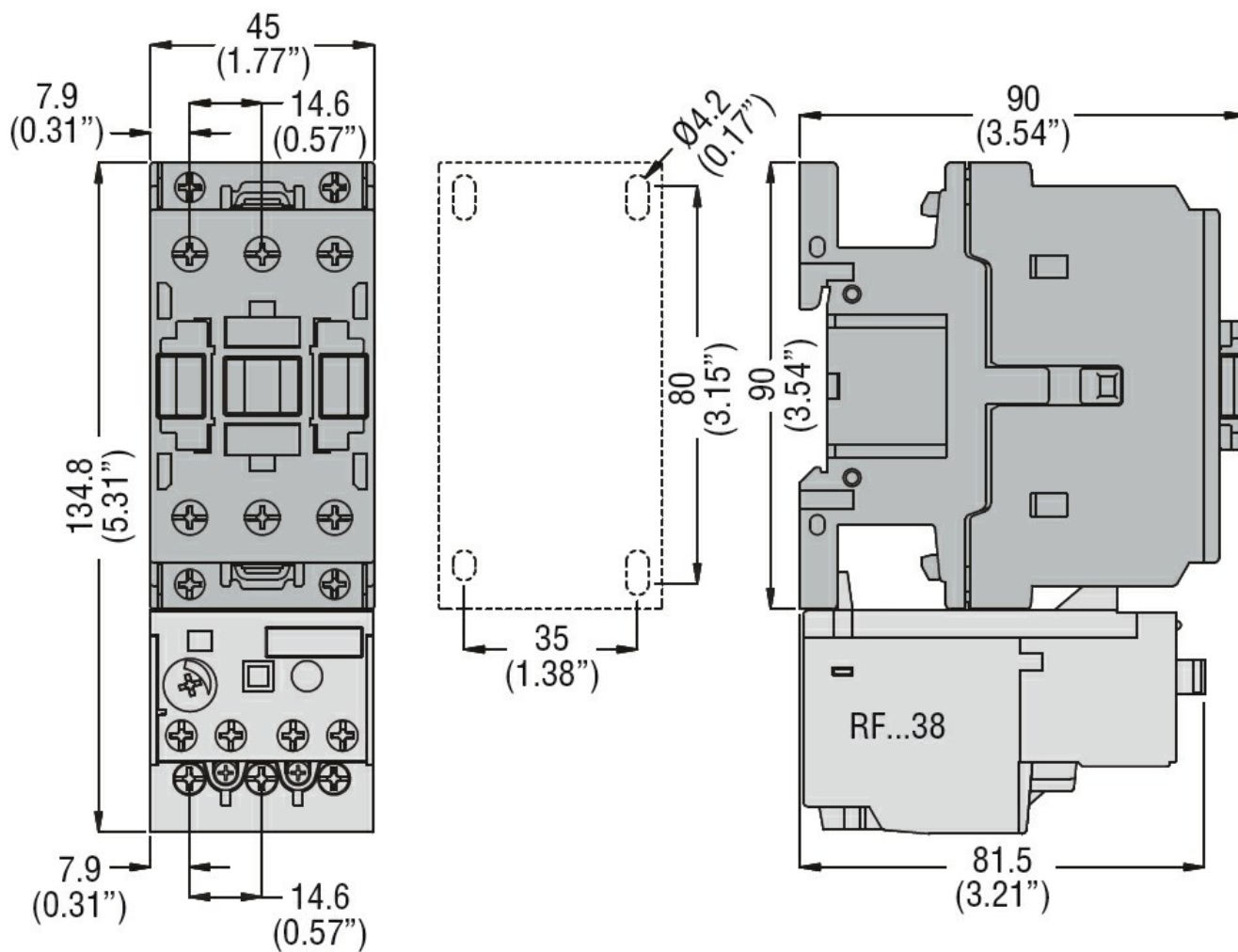
Number of poles	Nr.	3
Rated insulation voltage U_i IEC/EN	V	690
Rated impulse withstand voltage U_{imp}	kV	6
Operational frequency	min	Hz 25
	max	Hz 400
IEC Conventional free air thermal current I_{th}	A	56
Operational current I_e	AC-1 (=40°C)	A 56
	AC-1 (=55°C)	A 45
	AC-1 (=70°C)	A 40
	AC-3 (=440V =55°C)	A 32
	AC-4 (400V)	A 13.5
Rated operational power AC-3 (T=55°C)	230V	kW 8.8
	400V	kW 16
	415V	kW 17
	440V	kW 17
	500V	kW 20
	690V	kW 22
Rated operational power AC-1 (T=40°C)	230V	kW 21
	400V	kW 36
	500V	kW 45
	690V	kW 62
IEC max current I_e in DC1 with L/R = 1ms with 1 poles in series	=24V	A 30
	48V	A 26
	75V	A 22
	110V	A 8
	220V	A –
IEC max current I_e in DC1 with L/R = 1ms with 2 poles in series	=24V	A 32
	48V	A 32
	75V	A 28
	110V	A 25
	220V	A 3
IEC max current I_e in DC1 with L/R = 1ms with 3 poles in series	=24V	A 32
	48V	A 32
	75V	A 32
	110V	A 27

	220V	A	23
IEC max current Ie in DC1 with L/R = 1ms with 4 poles in series			
	=24V	A	—
	48V	A	—
	75V	A	—
	110V	A	—
	220V	A	—
IEC max current Ie in DC3-DC5 with L/R = 15ms with 1 poles in series			
	=24V	A	20
	48V	A	17
	75V	A	15
	110V	A	2,5
	220V	A	—
IEC max current Ie in DC3-DC5 with L/R = 15ms with 2 poles in series			
	=24V	A	25
	48V	A	22
	75V	A	20
	110V	A	15
	220V	A	3
IEC max current Ie in DC3-DC5 with L/R = 15ms with 3 poles in series			
	=24V	A	30
	48V	A	28
	75V	A	28
	110V	A	20
	220V	A	23
IEC max current Ie in DC3-DC5 with L/R = 15ms with 4 poles in series			
	=24V	A	—
	48V	A	—
	75V	A	—
	110V	A	—
	220V	A	—
Short-time allowable current for 10s (IEC/EN60947-1)		A	320
Protection fuse			
	gG (IEC)	A	63
	aM (IEC)	A	32
Making capacity (RMS value)		A	320
Breaking capacity at voltage			
	440V	A	256
	500V	A	240
	690V	A	192
Resistance per pole (average value)		m?	2
Power dissipation per pole (average value)			
	Ith	W	6
	AC3	W	2
Tightening torque for terminals			
	min	Nm	2.5
	max	Nm	3
	min	lbin	1.8
	max	lbin	2.2
Tightening torque for coil terminal			
	min	Nm	0.8
	max	Nm	1
	min	lbin	0.8

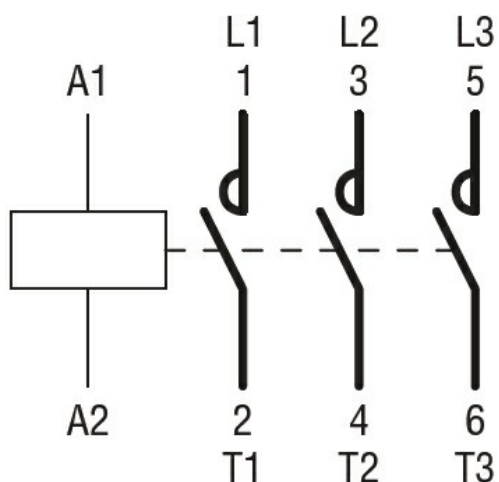
		max	I _{bin}	0.74
Max number of wires simultaneously connectable			Nr.	2
Conductor section	AWG/Kcmil	max		6
Flexible w/o lug conductor section		min	mm ²	2.5
		max	mm ²	16
Flexible c/w lug conductor section		min	mm ²	1
		max	mm ²	10
Flexible with insulated spade lug conductor section		min	mm ²	1
		max	mm ²	10
Power terminal protection according to IEC/EN 60529				IP20 when wired
Mechanical features				
Operating position		normal allowable		Vertical plan ±30°
Fixing				Screw / DIN rail 35mm
Weight			g	424
Conductor section	AWG/kcmil conductor section	max		6
Operations				
Mechanical life			cycles	20000000
Electrical life			cycles	1600000
Safety related data				
Performance level B10d according to EN/ISO 13489-1		rated load mechanical load	cycles	1600000
			cycles	20000000
Mirror contacts according to IEC/EN 60947-4-1				yes
EMC compatibility				yes
AC coil operating				
Rated AC voltage at 50/60Hz			V	230
AC operating voltage	of 50/60Hz coil powered at 50Hz			
	pick-up	min	%U _s	80
		max	%U _s	110
	drop-out	min	%U _s	20
		max	%U _s	55
	of 50/60Hz coil powered at 60Hz			
	pick-up	min	%U _s	85
		max	%U _s	110
	drop-out	min	%U _s	20
		max	%U _s	55
AC average coil consumption at 20°C	of 50/60Hz coil powered at 50Hz			

		in-rush holding	VA VA	75 9
of 50/60Hz coil powered at 60Hz				
		in-rush holding	VA VA	70 6.5
of 60Hz coil powered at 60Hz				
		in-rush holding	VA VA	75 9
Dissipation at holding =20°C 50Hz			W	2.5
Max cycles frequency				
Mechanical operation			cycles/h	3600
Operating times				
Average time for Us control in AC				
Closing NO		min max	ms ms	8 24
Opening NO		min max	ms ms	5 15
Closing NC		min max	ms ms	9 20
Opening NC		min max	ms ms	9 17
UL technical data				
Full-load current (FLA) for three-phase AC motor		at 480V at 600V	A A	27 27
Yielded mechanical performance for single-phase AC motor		110/120V 230V	HP HP	3 7.5
for three-phase AC motor		200/208V 220/230V 460/480V 575/600V	HP HP HP HP	10 10 20 25
General USE				
Contactor		AC current	A	55
Short-circuit protection fuse, 600V High fault		Short circuit current Fuse rating Fuse class	kA A J	100 100 J
Standard fault		Short circuit current Fuse rating	kA A	5 125
Ambient conditions				
Temperature				
Operating temperature		min	°C	-50

	max	°C	70
Storage temperature	min	°C	-60
	max	°C	80
Max altitude	m		3000
Resistance & Protection			
Pollution degree			3
Dimensions			



Wiring diagrams



Certifications and compliance

Compliance

CSA C22.2 n° 60947-1

CSA C22.2 n° 60947-4-1

IEC/EN 60947-1

IEC/EN 60947-4-1

UL 60947-1

UL 60947-4-1

Certificates

CCC

cULus

EAC

ETIM classification

ETIM 8.0

EC000066 -
Power contactor,
AC switching