



Product designation

Power contactor

Product type designation

BF95

**Contact characteristics**

Number of poles	Nr.	4
Rated insulation voltage $U_i$ IEC/EN	V	1000
Rated impulse withstand voltage $U_{imp}$	kV	8
Operational frequency	min	Hz 25
	max	Hz 400
IEC Conventional free air thermal current $I_{th}$	A	140
Operational current $I_e$		
	AC-1 ( $\leq 40^\circ\text{C}$ )	A 140
	AC-1 ( $\leq 55^\circ\text{C}$ )	A 115
	AC-1 ( $\leq 70^\circ\text{C}$ )	A 100
	AC-3 ( $\leq 440\text{V } \leq 55^\circ\text{C}$ )	A 95
	AC-4 (400V)	A 45
IEC max current $I_e$ in DC1 with $L/R \leq 1\text{ms}$ with 1 poles in series		
	$\leq 24\text{V}$	A 140
	48V	A 140
	75V	A 100
	110V	A 10
	220V	A —
IEC max current $I_e$ in DC1 with $L/R \leq 1\text{ms}$ with 2 poles in series		
	$\leq 24\text{V}$	A 140
	48V	A 140
	75V	A 140
	110V	A 110
	220V	A 12
IEC max current $I_e$ in DC1 with $L/R \leq 1\text{ms}$ with 3 poles in series		
	$\leq 24\text{V}$	A 140
	48V	A 140
	75V	A 155
	110V	A 120
	220V	A 125
IEC max current $I_e$ in DC1 with $L/R \leq 1\text{ms}$ with 4 poles in series		
	$\leq 24\text{V}$	A 140
	48V	A 140
	75V	A 155
	110V	A 140
	220V	A 140
IEC max current $I_e$ in DC3-DC5 with $L/R \leq 15\text{ms}$ with 1 poles in series		
	$\leq 24\text{V}$	A 140
	48V	A 44
	75V	A 36
	110V	A 6

	220V	A	—
IEC max current Ie in DC3-DC5 with L/R ≤ 15ms with 2 poles in series			
	≤24V	A	140
	48V	A	63
	75V	A	60
	110V	A	55
	220V	A	7
IEC max current Ie in DC3-DC5 with L/R ≤ 15ms with 3 poles in series			
	≤24V	A	140
	48V	A	115
	75V	A	90
	110V	A	85
	220V	A	76
IEC max current Ie in DC3-DC5 with L/R ≤ 15ms with 4 poles in series			
	≤24V	A	140
	48V	A	110
	75V	A	110
	110V	A	105
	220V	A	95
Short-time allowable current for 10s (IEC/EN60947-1)		A	760
Protection fuse			
	gG (IEC)	A	160
	aM (IEC)	A	100
Making capacity (RMS value)		A	1200
Breaking capacity at voltage			
	440V	A	1100
	500V	A	775
	690V	A	745
Resistance per pole (average value)		m?	0.45
Power dissipation per pole (average value)			
	Ith	W	8.8
	AC3	W	4.1
Tightening torque for terminals			
	min	Nm	6
	max	Nm	7
	min	lbin	4.4
	max	lbin	5.2
Tightening torque for coil terminal			
	min	Nm	0.8
	max	Nm	1
	min	lbin	0.59
	max	lbin	0.74
Conductor section			
AWG/Kcmil			
	max		2/0
Flexible w/o lug conductor section			
	min	mm <sup>2</sup>	1.5
	max	mm <sup>2</sup>	70
Flexible c/w lug conductor section			
	min	mm <sup>2</sup>	1.5
	max	mm <sup>2</sup>	70
Power terminal protection according to IEC/EN 60529			IP20 front

#### Mechanical features

## Operating position

	normal allowable	Vertical plan ±30°
Fixing		Screw / DIN rail 35mm
Weight	g	2420

## Conductor section

AWG/kcmil conductor section

max 2/0

## Auxiliary contact characteristics

Thermal current Ith	A	140
---------------------	---	-----

## Operations

Mechanical life	cycles	15000000
-----------------	--------	----------

Electrical life	cycles	1400000
-----------------	--------	---------

## AC coil operating

Rated AC voltage at 60Hz	V	460
--------------------------	---	-----

## AC operating voltage

of 60Hz coil powered at 60Hz

pick-up

min %Us 80

max %Us 110

drop-out

min %Us 20

max %Us 55

## AC average coil consumption at 20°C

of 60Hz coil powered at 60Hz

in-rush VA 300

holding VA 20

## Dissipation at holding ≤20°C 50Hz

W 6.5

## Max cycles frequency

Mechanical operation	cycles/h	1500
----------------------	----------	------

## Operating times

### Average time for Us control

in AC

Closing NO

min ms 16

max ms 32

Opening NO

min ms 9

max ms 24

## UL technical data

### General USE

Contactor

AC current A 150

### Short-circuit protection fuse, 600V

High fault

Short circuit current kA 100

Fuse rating A 200

Fuse class J

Standard fault

Short circuit current kA 10

Fuse rating A 250

Fuse class RK5

## Ambient conditions

## Temperature

### Operating temperature

min	°C	-50
max	°C	70

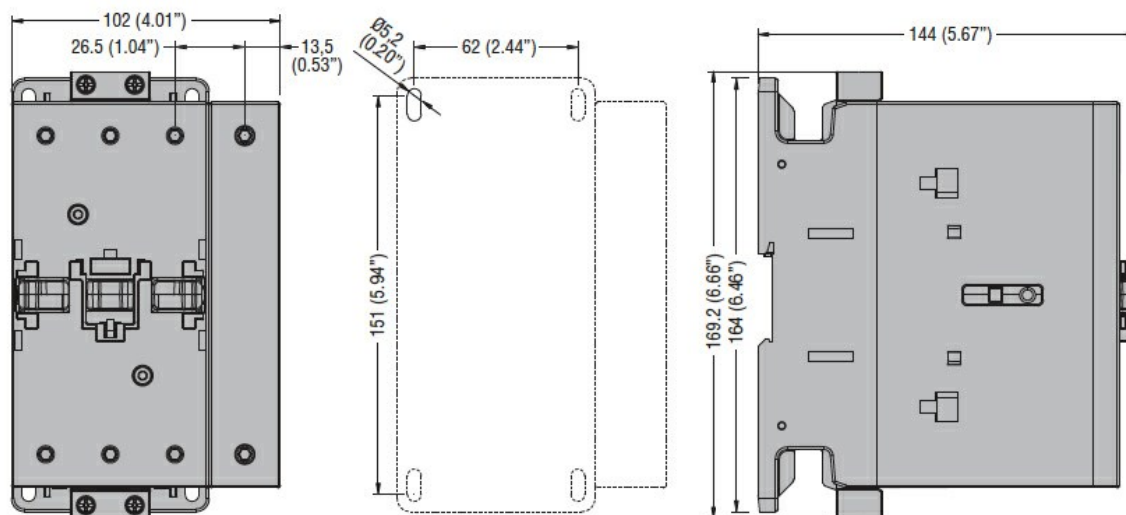
### Storage temperature

min	°C	-60
max	°C	+80

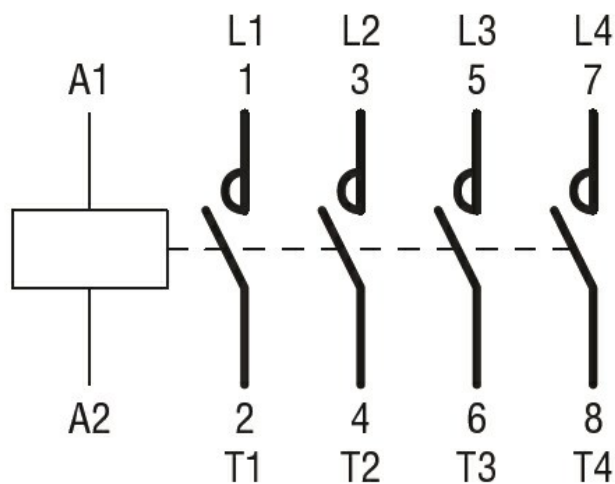
## Max altitude

m 3000

## Dimensions



## Wiring diagrams



## Certifications and compliance

### Compliance

CSA C22.2 n° 60947-1  
CSA C22.2 n° 60947-4-1  
IEC/EN 60947-1  
IEC/EN 60947-4-1  
UL 60947-1  
UL 60947-4-1

### Certificates

CCC  
cULus  
EAC

ETIM classification

ETIM 8.0

EC000066 -  
Power contactor,  
AC switching