



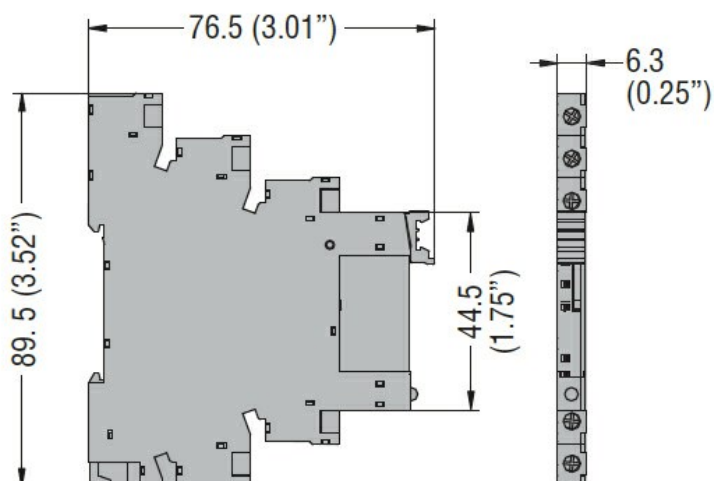
Product designation	SLIM RELAY+SOCKET		
Product type designation	HRA10		
Contact characteristics			
Contact configuration	1 C/O		
Rated insulation voltage Ui IEC/EN	V	250	
Rated impulse withstand voltage Uimp	kV	4	
IEC Conventional free air thermal current Ith	A	6	
Maximum instantaneous current	A	20 (500ms)	
Rated current (In)	A	6	
Relay control voltage	V	24VAC/VDC	
UL/CSA and IEC/EN 60947-5-1 designation	B300 – R300		
UL rating	6A 277VAC; 6A 30VDC		
Max contrrollable power in	AC-1	W	1500
	AC-15	VA	360
Rated operating power AC-1		VA	1500
Rated operating power AC-15	230 VAC	VA	360
Single-phase motor control	230VAC	kW	0.186
Rated operating current DC-1	30V	A	6
	110V	A	0.2
	220V	A	0.12
Minimum switching load	V / mA		5 / 100
Contact impedance	mO		100
Contact material	Ag/Ni		
Operating times			
Closing	ms		≤8
Opening	ms		≤4
Operations			
Mechanical life	cycles		10000000
Electrical life AC1	cycles		30000
Coil characteristics			
Relay control voltage + socket	V		24VAC/DC
Average coil consumption DC at 20°C	W		0.2
Operating range	Closing	% Un	≥75
	Opening	% Un	≥5
Maximum cycle frequency	cycles/h		10000
Mechanical features			
Max socket terminal tightening torque	Nm		0.5

Socket screw tightening tool (cross / flat blade)				PH0 / 3.5mm	
Conductor section					
AWG/Kcmil		min		20	
		max		16	
IEC		min		mm <sup>2</sup>	0.5
		max		mm <sup>2</sup>	1.5
Operating position					
		normal		Any	
Fixing				On 35mm DIN rail	
Ambient conditions					
Temperature					
Operating temperature		min		°C	-40
		max		°C	+70
Storage temperature		min		°C	-40
		max		°C	+80

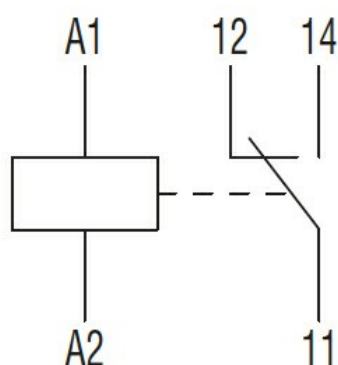
#### Other features

Indication	Yes (on the socket)
Mechanical contact position indicator	No
Mechanical test actuator	No

#### Dimensions



#### Wiring diagrams



## Certifications and compliance

### Compliance

IEC/EN 61810

### Certificates

cURus

EAC

VDE

## ETIM classification

ETIM 8.0

EC001437 -  
Switching relay