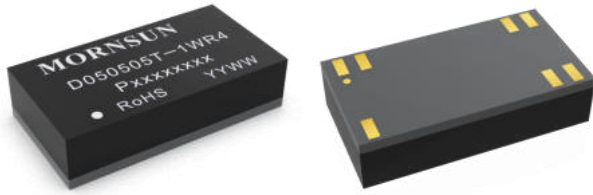


1W dual isolated DC-DC converter
Fixed input voltage, unregulated dual output



Patent Protection RoHS

D050505T-1WR4 are specially designed for applications where two isolated voltage is required in a distributed power supply system and especially suitable in applications such as digital circuits, low frequency analog circuits, relay-driven circuits and data switching circuits.

FEATURES

- Ultra-small, ultra-thin DFN package (13.20 x 7.00 x 3.10mm)
- Isolation capacitance as low as 15pF
- I/O isolation test voltage 3k VDC, O1/O2 isolation test voltage 1.5k VDC
- Operating ambient temperature range: -40°C to +125°C
- High efficiency up to 87%
- Continuous short-circuit protection

Selection Guide

Certification	Part No.	Input Voltage (VDC)	Output				Full Load Efficiency (%) Min./Typ.	Capacitive Load(μF) Max.*
		Nominal (Range)	Voltage (VDC)		Current(mA) Max./Min.			
—	D050505T-1WR4	5 (4.5-5.5)	Vo1	5	Io1	100/10	83/87	1200
			Vo2	5	Io2	100/10		

Note: *Each of the two outputs has the same maximum capacitive load.

Input Specifications

Item	Operating Conditions	Min.	Typ.	Max.	Unit
Input Current (full load / no-load)	5VDC input	--	230/7	241/15	mA
Reflected Ripple Current*		--	10	--	
Surge Voltage (1sec. max.)	5VDC input	-0.7	--	9	VDC
Input Filter		Capacitance filter			
Hot Plug		Unavailable			

Note: * Please refer to DC-DC Converter Application Note for detailed description of reflected ripple current testing method.

Output Specifications

Item	Operating Conditions	Min.	Typ.	Max.	Unit
Voltage Accuracy		See output regulation curve (Fig. 1)			
Linear Regulation	Input voltage change: ±1%	--	--	1.2	--
Load Regulation	10%-100% load	--	8	15	%
Ripple & Noise*	20MHz bandwidth	---	30	75	mVp-p
Temperature Coefficient	Full load	--	±0.02	--	%/°C
Short-circuit Protection		Continuous, self-recovery			

Note: * The "parallel cable" method is used for ripple and noise test, please refer to DC-DC Converter Application Notes for specific information.

General Specifications

Item	Operating Conditions	Min.	Typ.	Max.	Unit
Isolation	Input-output electric strength test for 1 minute with a leakage current of 1mA max.	3000	--	--	VDC
	Vo1-Vo2 electric strength test for 1 minute with a leakage current of 1mA max.	1500	--	--	
Insulation Resistance	Input-output, Vo1-Vo2 resistance at 500VDC	1000	--	--	MΩ
Isolation Capacitance	Input-output, Vo1-Vo2 capacitance at 100kHz/0.1V	--	15	--	pF

Operating Temperature	Derating when operating temperature $\geq 105^{\circ}\text{C}$, (see Fig. 2)	-40	--	125	$^{\circ}\text{C}$
Storage Temperature		-55	--	125	
Case Temperature Rise	$T_a=25^{\circ}\text{C}$	--	7	--	
Storage Humidity	Non-condensing	--	--	95	%RH
Reflow Soldering Temperature*		Peak temp. $\leq 245^{\circ}\text{C}$, maximum duration time $\leq 60\text{s}$ over 217°C			
Vibration		10-150Hz, 0.75mm, 5G, 90 min. along X, Y and Z			
Switching Frequency	Full load, nominal input voltage	--	300	--	kHz
MTBF	MIL-HDBK-217F@ 25°C	7500	--	--	k hours
Moisture Sensitivity Level (MSL)	IPC/JEDEC J-STD-020D.1	Level 3			

Note: * See also IPC/JEDEC J-STD-020D.1.

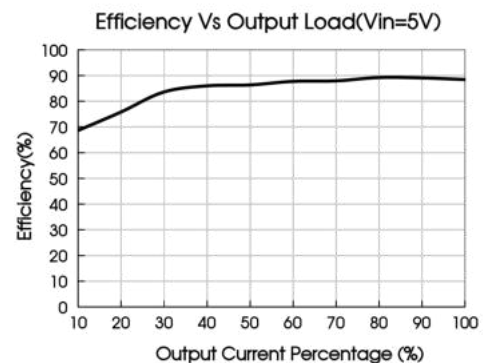
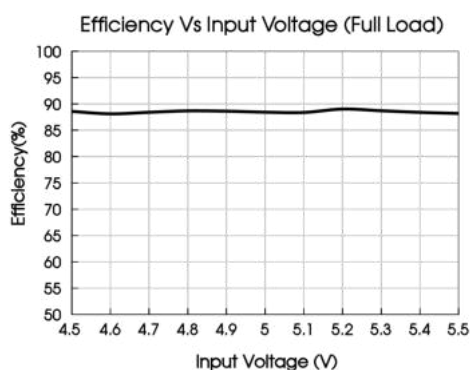
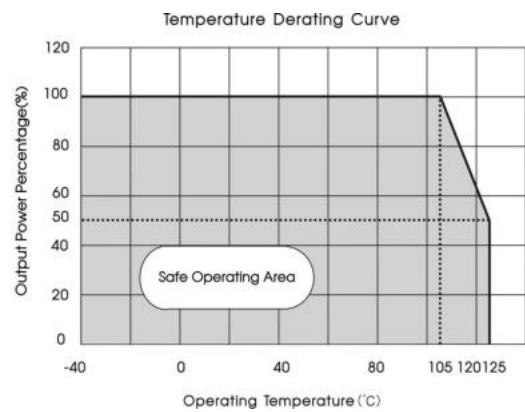
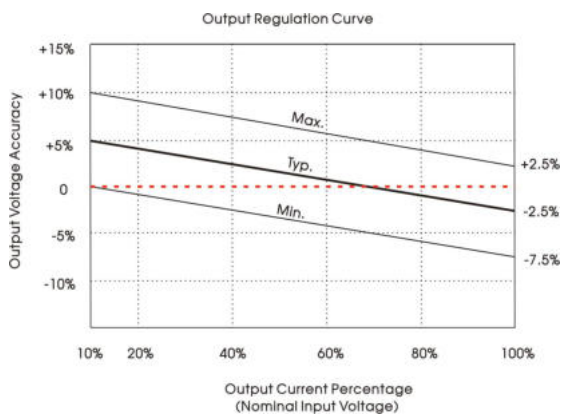
Mechanical Specifications

Case Material	Black epoxy resin; flame-retardant and heat-resistant (UL94 V-0)
Dimensions	13.20 x 7.00 x 3.10 mm
Weight	0.7(Typ.)
Cooling Method	Free air convection

Electromagnetic Compatibility (EMC)

Emissions	CE	CISPR32/EN55032	CLASS B (see Fig. 4 for recommended circuit)
	RE	CISPR32/EN55032	CLASS B (see Fig. 4 for recommended circuit)
Immunity	ESD	IEC/EN61000-4-2	Contact $\pm 8\text{kV}$ perf. Criteria B
	RS	IEC/EN61000-4-3	10V/m perf. Criteria A
	CS	IEC/EN61000-4-6	3Vr.m.s perf. Criteria A

Typical Characteristic Curves



Design Reference

1. Typical application

Input and/or output ripple can be further reduced, by connecting a filter capacitor from the input and/or output terminals to ground as shown in Fig.3.

Choosing suitable filter capacitor values is very important for a smooth operation of the modules. For recommended input and output capacitor values refer to Table 1.

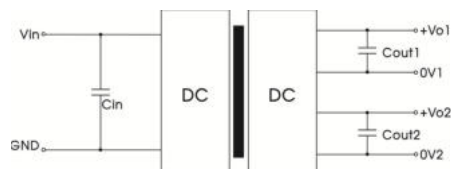


Fig.3

Table 1: Recommended input and output capacitor values

Vin	Cin	Vo1	Cout1	Vo2	Cout2
5VDC	4.7μF/25V	5VDC	10μF/25V	5VDC	10μF/25V

2. EMC (CLASS B) compliance circuit

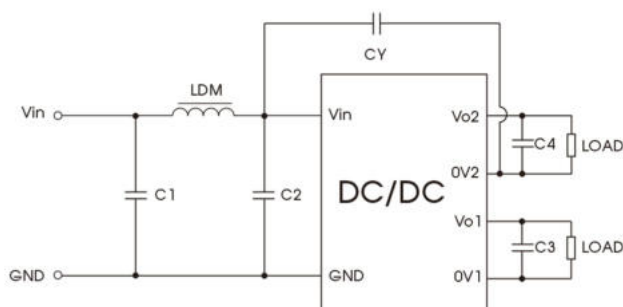


Fig.4

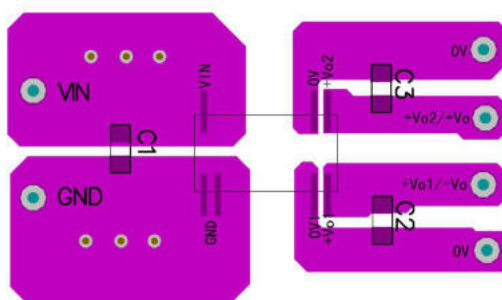
Table 2: Recommended EMC filter values

Table 2: Recommended EMI filter values			
Input voltage 5VDC	Output voltage		5VDC
	Emissions	C1/C2	4.7µF /25V
		CY	100pF /4kVDC
		C3/C4	Refer to the Cout in table 1
		LDM	6.8µH

3. For additional information, please refer to DC-DC converter application notes on

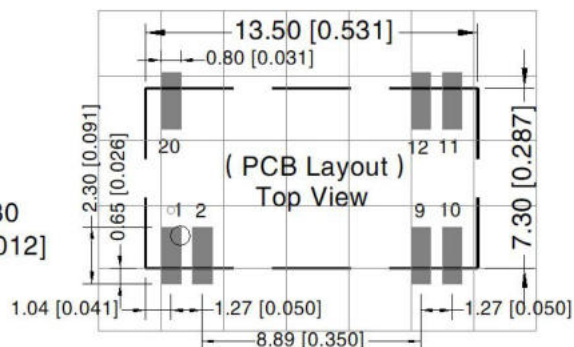
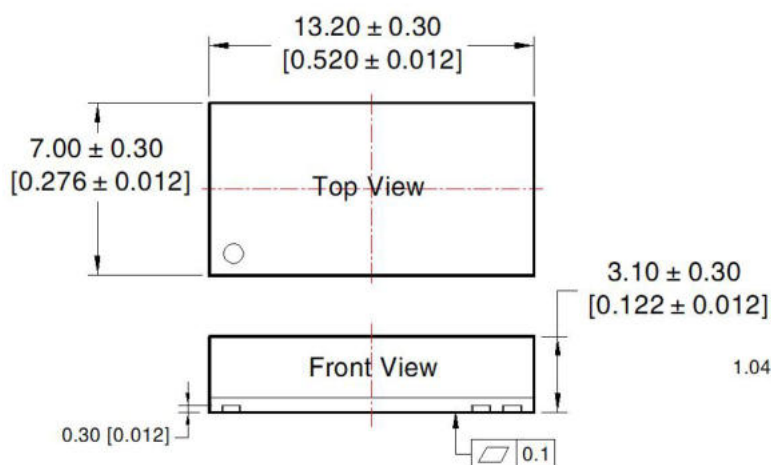
www.mornsun-power.com

Temperature Rise Test PCB Layout



Dimensions and Recommended Layout

THIRD ANGLE PROJECTION 

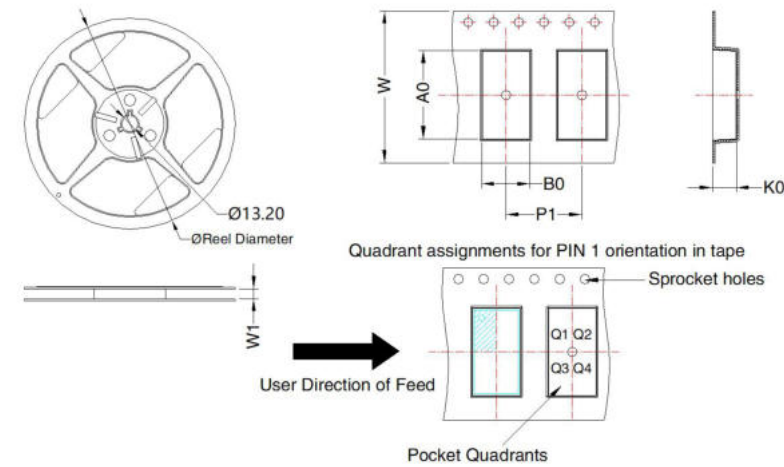


Note: Grid 2.54*2.54mm

Pin-Out	
Pin	Mark
1,2	GND
9	0V1
10	Vo1
11	Vo2
12	0V2
20	Vin

Note:
Unit: mm[inch]
General tolerances: ± 0.10[± 0.004]

Tape/Reel packaging



Device	Package Type	Pin	MPQ	Reel Diameter (mm)	Reel Width W1 (mm)	A0 (mm)	B0 (mm)	K0 (mm)	P1 (mm)	W (mm)	Pin1 Quadrant
D05xxT-1WR4	DFN 7x13.2	7	350	180.0	24.4	14.05	7.75	3.8	12.0	24.0	Q1

Notes:

- For additional information on Product Packaging please refer to www.mornsun-power.com. Tape/Reel packaging bag number: 58240038;
- Refer to *IPC 7093* for the welding process design of this product. For detailed operation guidance, please refer to *Hot Air Gun Welding Operation Instruction for DFN Package Product* or *Welding Operation Instruction for DFN Package Product*;
- If the product is not operated within the required load range, the product performance cannot be guaranteed to comply with all parameters in the datasheet;
- The maximum capacitive load offered were tested at input voltage range and full load;
- Unless otherwise specified, parameters in this datasheet were measured under the conditions of $T_a=25^{\circ}\text{C}$, humidity<75%RH with nominal input voltage and rated output load;
- All index testing methods in this datasheet are based on our company corporate standards;
- We can provide product customization service, please contact our technicians directly for specific information;
- Products are related to laws and regulations: see "Features" and "EMC";
- Our products shall be classified according to ISO14001 and related environmental laws and regulations, and shall be handled by qualified units.

MORNSUN Guangzhou Science & Technology Co., Ltd.

Address: No. 5, Kehui St. 1, Kehui development center, Science Ave., Guangzhou Science City, Huangpu District, Guangzhou, P.R.China

Tel: 86-20-38601850

Fax: 86-20-38601272

E-mail: info@mornsun.cn

www.mornsun-power.com