



**SICK**  
Sensor Intelligence.



Illustration may differ



Ordering information

| Type           | part no. |
|----------------|----------|
| WSE9-3P2230S05 | 1073459  |

Other models and accessories → [www.sick.com/W9](http://www.sick.com/W9)

Detailed technical data

Features

|                                 |                                   |
|---------------------------------|-----------------------------------|
| Functional principle            | Through-beam photoelectric sensor |
| Dimensions (W x H x D)          | 12.2 mm x 49.8 mm x 23.6 mm       |
| Housing design (light emission) | Rectangular                       |
| Mounting hole                   | M3                                |
| Sensing range max.              | 0 m ... 10 m                      |
| Sensing range                   | 0 m ... 7 m                       |
| Type of light                   | Visible red light                 |
| Light source                    | PinPoint LED <sup>1)</sup>        |
| Light spot size (distance)      | Ø 25 mm (1 m)                     |
| Wave length                     | 650 nm                            |
| Adjustment                      | None                              |

<sup>1)</sup> Average service life: 100,000 h at T<sub>J</sub> = +25 °C.

## Mechanics/electronics

|   |  |
|---|--|
| <b>Supply voltage <math>U_B</math></b>      | 10 V DC ... 30 V DC <sup>1)</sup>                      |
| <b>Ripple</b>                               | < 5 V <sub>pp</sub> <sup>2)</sup>                      |
| <b>Current consumption</b>                  | 30 mA <sup>3)</sup>                                    |
| <b>Switching output</b>                     | PNP <sup>4)</sup>                                      |
| <b>Switching mode</b>                       | Light/dark switching <sup>4)</sup>                     |
| <b>Output current <math>I_{max}</math></b>  | ≤ 100 mA <sup>5)</sup>                                 |
| <b>Response time</b>                        | < 0.5 ms <sup>6)</sup>                                 |
| <b>Switching frequency</b>                  | 1,000 Hz <sup>7)</sup>                                 |
| <b>Connection type</b>                      | Male connector M8, 4-pin                               |
| <b>Circuit protection</b>                   | A <sup>8)</sup><br>B <sup>9)</sup><br>C <sup>10)</sup> |
| <b>Protection class</b>                     | III  |
| <b>Weight</b>                               | 13 g   |
| <b>Housing material</b>                     | Plastic, VISTAL®                                       |
| <b>Optics material</b>                      | Plastic, PMMA  |
| <b>Enclosure rating</b>                     | IP66<br>IP67<br>IP69K                                  |
| <b>Ambient operating temperature</b>        | -40 °C ... +60 °C                                      |
| <b>Ambient temperature, storage</b>         | -40 °C ... +75 °C                                      |
| <b>UL File No.</b>                          | NRKH.E181493   |
| <b>Part number of individual components</b> | 2055822 WE9-3P2230 2079488 WS9-3D2230S05               |

<sup>1)</sup> Limit values when operated in short-circuit protected network: max. 8 A.

<sup>2)</sup> May not fall below or exceed  $U_V$  tolerances.

<sup>3)</sup> Without load.

<sup>4)</sup> Q = light switching.

<sup>5)</sup> At and above  $T_u$  50 °C, a max. load current of  $I_{max} = 50$  mA is permitted.

<sup>6)</sup> Signal transit time with resistive load.

<sup>7)</sup> With light/dark ratio 1:1.

<sup>8)</sup> A =  $V_S$  connections reverse-polarity protected.

<sup>9)</sup> B = inputs and output reverse-polarity protected.

<sup>10)</sup> C = interference suppression.

## Safety-related parameters

|                         |             |
|-------------------------|-------------|
| <b>MTTF<sub>D</sub></b> | 1,126 years |
| <b>DC<sub>avg</sub></b> | 0 %         |

## Certificates

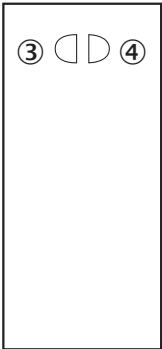
|   |   |
|---|---|
| <b>EU declaration of conformity</b>       | ✓ |
| <b>UK declaration of conformity</b>       | ✓ |
| <b>ACMA declaration of conformity</b>     | ✓ |
| <b>Moroccan declaration of conformity</b> | ✓ |
| <b>China-RoHS</b>                         | ✓ |

|   |   |
|---|---|
| ECOLAB certificate                                | ✓ |
| cULus certificate                                 | ✓ |
| Photobiological safety (DIN EN 62471) certificate | ✓ |

Classifications

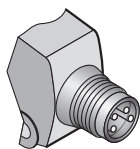
|                |          |
|----------------|----------|
| ECLASS 5.0     | 27270901 |
| ECLASS 5.1.4   | 27270901 |
| ECLASS 6.0     | 27270901 |
| ECLASS 6.2     | 27270901 |
| ECLASS 7.0     | 27270901 |
| ECLASS 8.0     | 27270901 |
| ECLASS 8.1     | 27270901 |
| ECLASS 9.0     | 27270901 |
| ECLASS 10.0    | 27270901 |
| ECLASS 11.0    | 27270901 |
| ECLASS 12.0    | 27270901 |
| ETIM 5.0       | EC002716 |
| ETIM 6.0       | EC002716 |
| ETIM 7.0       | EC002716 |
| ETIM 8.0       | EC002716 |
| UNSPSC 16.0901 | 39121528 |

Adjustments No adjustment possibility

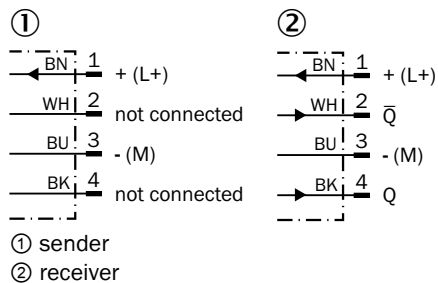


- ③ LED indicator yellow: Status of received light beam
- ④ LED indicator green: power on

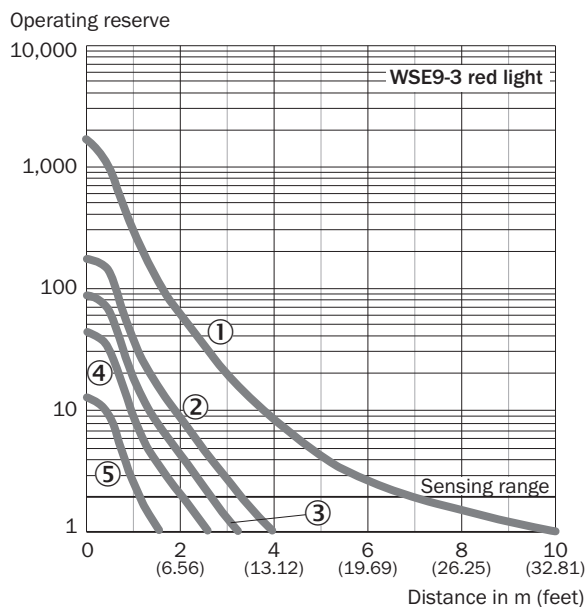
## Connection type



## Connection diagram Cd-085

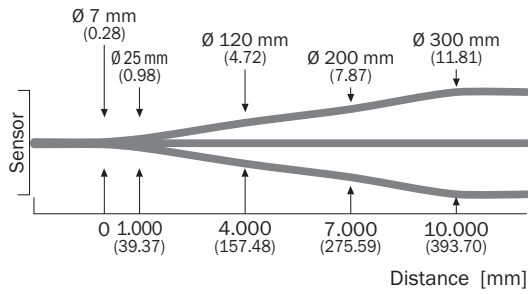


## Characteristic curve WSE9-3, red light, 10 m

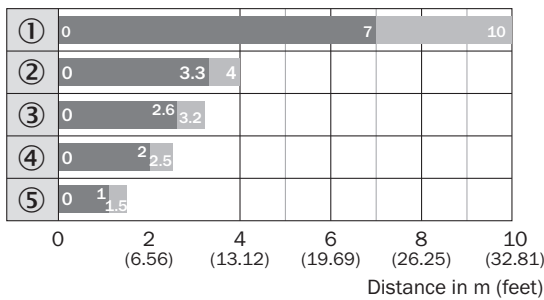


- ① Without masks
- ② With slotted mask, width 2.0 mm
- ③ With slotted mask, width 1.5 mm
- ④ With slotted mask, width 1.0 mm
- ⑤ With slotted mask, width 0.5 mm

### Light spot size WSE9-3, red light, 10 m

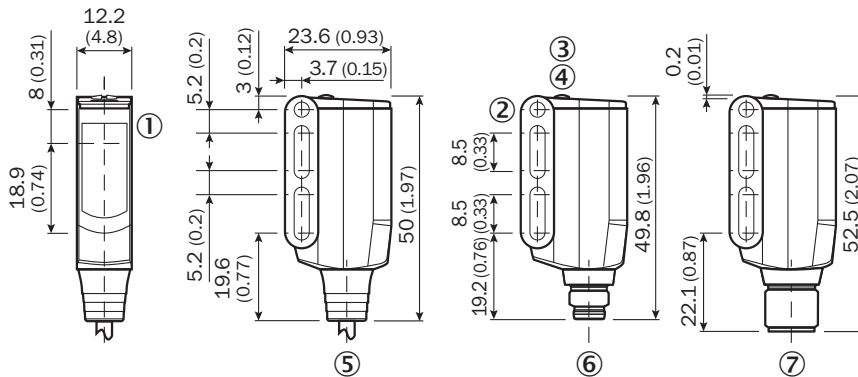


### Sensing range diagram WSE9-3, red light, 10 m



- ① Without masks
- ② With slotted mask, width 2.0 mm
- ③ With slotted mask, width 1.5 mm
- ④ With slotted mask, width 1.0 mm
- ⑤ With slotted mask, width 0.5 mm

### Dimensional drawing WL9-3, WSE9-3






Dimensions in mm (inch)

- ① Sender and receiver optical axis center
- ② Mounting hole M3 (Ø 3.1 mm)
- ③ LED indicator yellow: Status of received light beam
- ④ LED indicator green: power on
- ⑤ Connecting cable or connector
- ⑥ male connector M8, 4-pin
- ⑦ male connector M12, 4-pin

## Recommended accessories

Other models and accessories → [www.sick.com/W9](http://www.sick.com/W9)

|   | Brief description  | Type               | part no. |
|---|--|--------------------|----------|
| Mounting systems  |  |                    |          |
|  | <ul style="list-style-type: none"> <li>• <b>Description:</b> Mounting bracket</li> <li>• <b>Material:</b> Steel</li> <li>• <b>Details:</b> Steel, zinc coated</li> <li>• <b>Items supplied:</b> Mounting hardware included</li> <li>• <b>Suitable for:</b> W9-3</li> </ul>   | BEF-WN-W9-2        | 2022855  |
| connectors and cables   |  |                    |          |
|  | <ul style="list-style-type: none"> <li>• <b>Connection type head A:</b> Female connector, M8, 4-pin, straight, A-coded</li> <li>• <b>Connection type head B:</b> Flying leads</li> <li>• <b>Signal type:</b> Sensor/actuator cable</li> <li>• <b>Cable:</b> 5 m, 4-wire, PVC</li> <li>• <b>Description:</b> Sensor/actuator cable, unshielded</li> <li>• <b>Application:</b> Zones with chemicals, Uncontaminated zones</li> </ul> | YF8U14-050VA3XLEAX | 2095889  |
|  | <ul style="list-style-type: none"> <li>• <b>Connection type head A:</b> Male connector, M8, 4-pin, straight, A-coded</li> <li>• <b>Description:</b> Unshielded</li> <li>• <b>Connection systems:</b> Screw-type terminals</li> <li>• <b>Permitted cross-section:</b> 0.14 mm² ... 0.5 mm²</li> </ul>   | STE-0804-G         | 6037323  |

## SICK AT A GLANCE

SICK is one of the leading manufacturers of intelligent sensors and sensor solutions for industrial applications. A unique range of products and services creates the perfect basis for controlling processes securely and efficiently, protecting individuals from accidents and preventing damage to the environment.

We have extensive experience in a wide range of industries and understand their processes and requirements. With intelligent sensors, we can deliver exactly what our customers need. In application centers in Europe, Asia and North America, system solutions are tested and optimized in accordance with customer specifications. All this makes us a reliable supplier and development partner.

Comprehensive services complete our offering: SICK LifeTime Services provide support throughout the machine life cycle and ensure safety and productivity.

For us, that is “Sensor Intelligence.”

## WORLDWIDE PRESENCE:

Contacts and other locations –[www.sick.com](http://www.sick.com)