

CONNECT AND PROTECT

EuropacPRO Industrial Applications

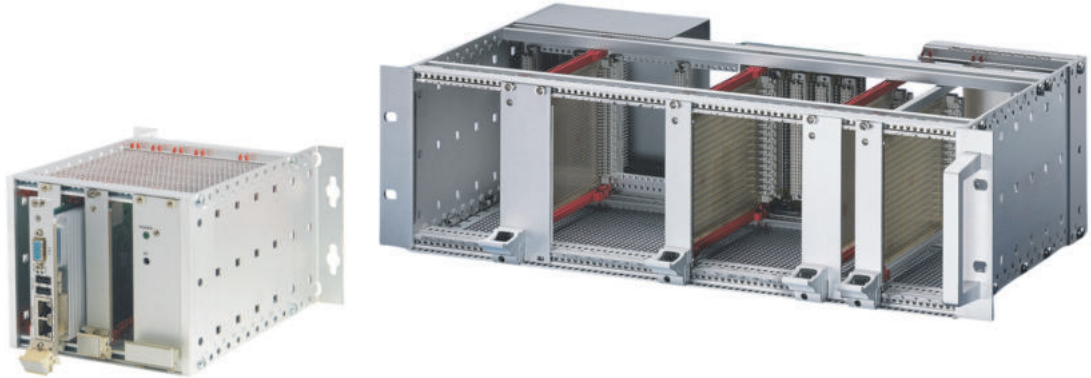
12/2022

Subracks – EuropacPRO for Industrial Applications

OVERVIEW

MAIN CATALOG

| | |
|---|----|
| Cabinets | 1 |
| Wall mounted cases | 2 |
| Accessories for cabinets and wall mounted cases . . | 3 |
| Climate control . . | 4 |
| Electronics cases | 5 |
| Subracks/ 19" chassis | 6 |
| Front panels, plug-in units | 7 |
| Systems | 8 |
| Power supply units | 9 |
| Backplanes | 10 |
| Connectors, front panel component system | 11 |
| Appendix | 12 |



06112008

We package your euroboards - even for applications in harsh industrial environments

- A wide range in different dimensions, with finishes for the most diverse applications
- In accordance with the IEC 60297-3-101 and IEEE 1101.1 standards
- Tested to IEC 61587, VG 95373 T15, EN 50155, BN 411002, NF F 67-012, NF F 60-002
- Delivered as a kit in space-saving package or individually assembled and fitted to your specifications

Applications



06112009

Subracks for mounting on mounting plate incl. connection field



06112010

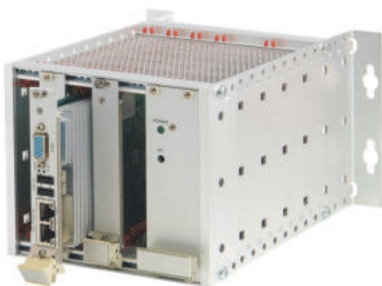
Subracks with special adaptation

Subracks – EuropacPRO for Industrial Applications

OVERVIEW

Subrack for industrial applications

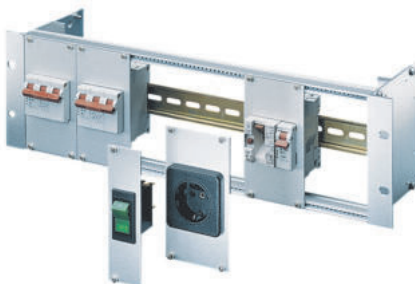
- Accommodates electronic boards in industrial applications
- Mounting frame for power distribution modules (connectors, RCD switches, ...)
- Bracket for panel mounting



06112002

Subrack for mounting on a mounting plate

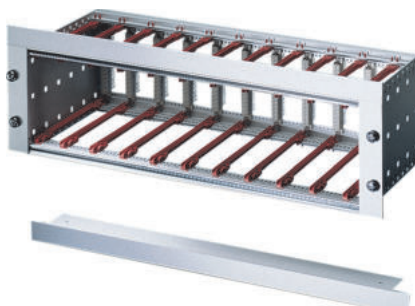
- Height 3 U, width 28 HP, depth 205 mm
- For mounting on mounting plate
- For direct mounting of backplanes or to fit DIN plugs, DIN 41612/EN 60603-2



01494031

Module support

- Height 3 U, width 84 HP, depth 115 mm
- Power distribution modules to mount on lipped horizontal rail in accordance with DIN 43880



06197021

Bracket for mounting subracks in a panel

- Bracket widths 42 and 84 HP

Accessories

- Accessories (e.g. lipped rail adaptor, horizontal rails)

ServicePLUS

- e.g. modification (cut-outs)
- e.g. downloads (CAD drawings, user manuals, test reports)
- e.g. custom solutions (special depths, electromagnetically shielded applications)

Overview 6.86

Introduction 6.4

Subrack for wall mounting . . 6.88

Module support 6.89

Bracket for panel mounting 6.90

Accessories 6.91

Application examples 6.85

europacPRO . . . 6.6
Subracks for mobile railway applications 6.70
europacPRO for rugged applications 6.92

Subracks – EuropacPRO for Industrial

EUROPACPRO SUBRACK, UNSHIELDED

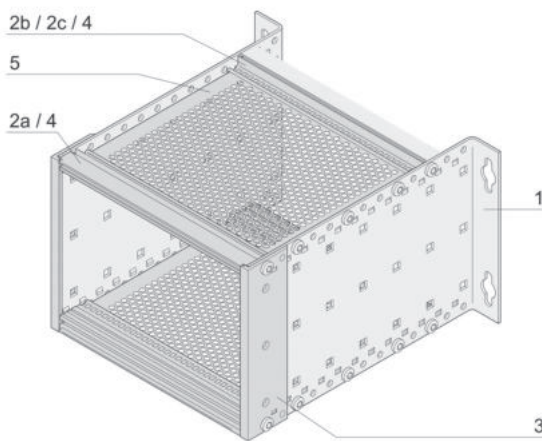


- Subrack to mount on the wall or on mounting plate
- For mounting of euroboards to IEC 60297-3-101 in size 3 U, 160 mm deep
- Versions
 - For connector mounting (DIN 41612, EN 60602-3)
 - For backplane mounting

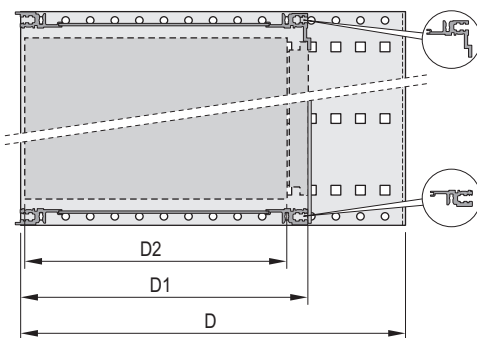
DELIVERY COMPRISES

| Item | Qty | Description |
|------|-----|---|
| 1 | 2 | Side panel, 3 U, Al, 2 mm with integrated wall-mounting bracket |
| 2a | 2 | Front horizontal rail (L-KD) |
| 2b | 2 | Rear horizontal rail (L-RC) for backplane mounting |
| 2c | 2 | Rear horizontal rail (L-MZ) for connector mounting |
| 3 | 2 | Rear angle |
| 4 | 2/4 | Threaded insert, St, zinc-plated |
| 5 | 2 | Cover plate for inserted in the groove of the horizontal rails |
| 6 | 1 | Fixing materials kit, user manual |

06112001



06121050

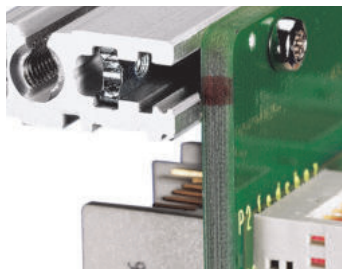


06112051

Connector/backplane mounting;
D=overall depth, D1=insertion depth,
D2=board depth = D1 - 15 mm



Horizontal rail to rear for connector mounting



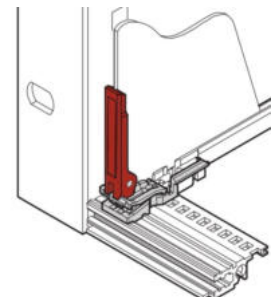
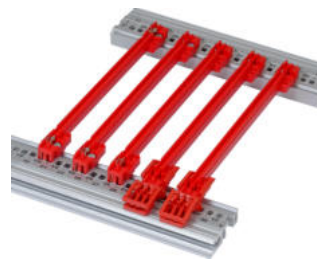
Horizontal rail to rear for direct backplane mounting

ORDER INFORMATION

| Description | Height U | Width HP | Depth D mm | Depth D1 mm | Part no. |
|-------------------------------|----------|----------|------------|-------------|------------------|
| For connector mounting | 3 | 28 | 205 | 175 | 24563-109 |
| For direct backplane mounting | 3 | 28 | 205 | 175 | 24563-107 |

Accessories

| | |
|--|------------------|
| Guide rails, accessories, 160 mm deep, PC, UL 94 V-0, red, groove width 2 mm, PU 10 pieces | 24568-363 |
| ESD-Clip, PU 50 pieces | 24560-255 |
| Board locking C, red, PU 10 pieces | 24560-377 |
| Board handle C, red, PU 10 pieces | 24560-378 |



| | |
|-------------------------|------------------|
| Front panels | Page 7.5 |
| Front panel with handle | Page 7.16 |

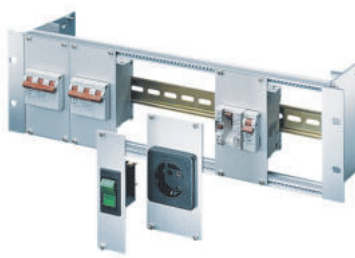
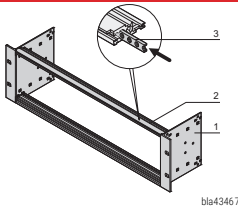

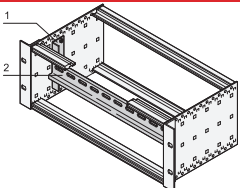

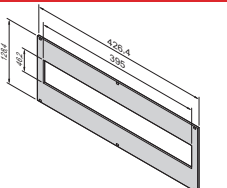
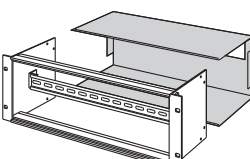
NOTE

- EMC version on request

Subracks – EuropacPRO for Industrial

19" MODULE SUPPORT, SUPPORT RAIL TO DIN 43880, HOOD

ORDER INFORMATION

| | 19" module support to accommodate power distribution modules | Support rails to DIN 43880 | Front panel for 19" module support | Hood |
|---|--|--|---|--|
|  <p>01494031</p> |  <p>bla43467</p>  <p>3 U, 84 HP, 115.5 mm deep; 2 side panels Al, 2 mm; 2 horizontal rails with short lip (L-KD), Al extrusion, surface anodised, contact surfaces conductive; 2 threaded inserts, St, zinc-plated; GND/earthing kit; fixing material kit;</p> <p>Please order support rail separately</p> |  <p>06105080</p>  <p>2 adaptor brackets, Al, 2 mm; support rail, St, zinc-plated, (35/7.5 mm); for width 84 HP (430.5 mm);</p> <p>Mounted in module support or subrack on the side panel</p> |  <p>06111053</p> <p>3 U, 84 HP, Al, 2.5 mm, front anodised, rear iridescent green chromated; GND/earth connection 6.3 mm FASTON; (cut-out 395 mm x 46.2 mm); two blanking plates, plastic, polyester, colour similar to RAL 7035; to cover unused module slots</p> |  <p>BLA43492</p> <p>Al, 1 mm, with brush strip; is bolted to the rear of the module support; GND/earthing kit</p> |
| | PU 1 kit | PU 1 kit | 1 piece | 1 piece |
| | 24563-100 | 24565-100 | 24563-096 | 24564-100 |

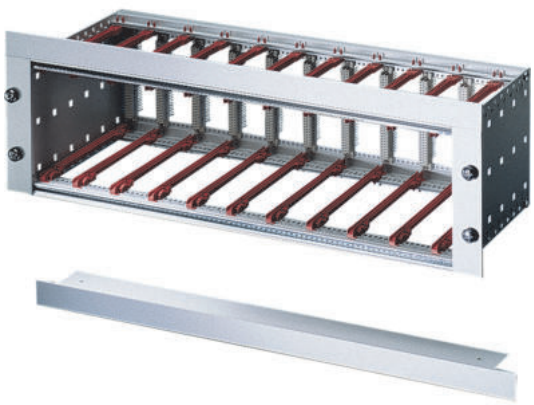
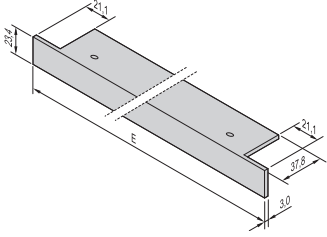
Accessories

- Power distribution modules see page 3.34

Subracks – EuropacPRO for Industrial

BRACKET FOR PANEL MOUNTING

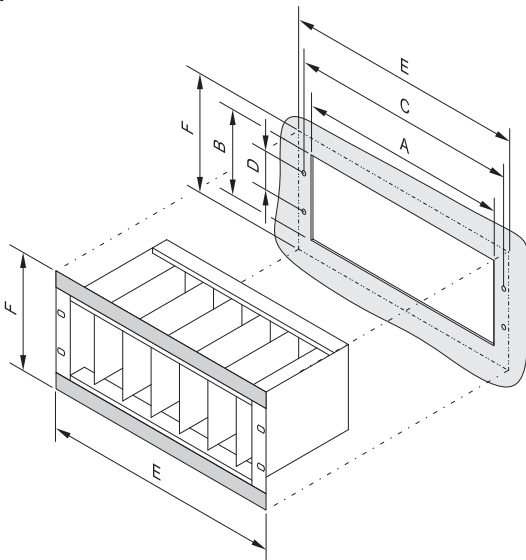
ORDER INFORMATION

| | | Bracket (mounting angle) |
|--|--------------|---|
|  | |  <p>Al extrusion, anodised; serves as front visual cover of subrack at top and bottom when fitted into a panel; screwed in from the front with the horizontal rail; 2 brackets and 4 screws are required per subrack</p> |
| Usable width HP | Length mm | 1 piece |
| 42 | 269.2 | 34561-777 |
| 84 | 482.6 | 34561-779 |
| Torx panhead screw 2.5 x 9.3, zinc-plated, PU 100 pieces | | 24560-141 |

NOTE

- Further widths available on request

Assembly cut-out



Dimensions table

| | | | | | | | |
|---|----|-------|-------|-------|-------|-------|-------|
| 3 | 42 | 237.0 | 145.0 | 252.0 | 57.15 | 269.2 | 179.4 |
| 3 | 63 | 343.0 | 145.0 | 358.5 | 57.15 | 375.9 | 179.4 |
| 3 | 84 | 450.0 | 145.0 | 465.0 | 57.15 | 482.6 | 179.4 |
| 6 | 42 | 237.0 | 278.5 | 252.0 | 190.5 | 269.2 | 312.7 |
| 6 | 63 | 343.0 | 278.5 | 358.5 | 190.5 | 375.9 | 312.7 |
| 6 | 84 | 450.0 | 278.5 | 465.0 | 190.5 | 482.6 | 312.7 |

Subracks – EuropacPRO for Industrial

ADAPTOR FOR HORIZONTAL RAIL MOUNTING

- For mounting e.g. small subracks, small wall mounted cases, frame type plug-in units or PSUs on a horizontal rail with lip
- Adaptor is bolted to the desired product and can then be clipped to the lipped horizontal rail (DIN 43880)



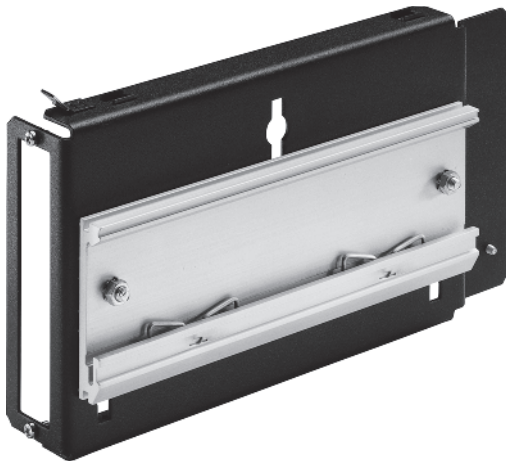
DELIVERY COMPRISES

| Item | Qty | Description |
|------|-----|--------------------------------------|
| 1 | 1 | Adaptor, Al extrusion, length 160 mm |
| 1 | 1 | Assembly kit |

ORDER INFORMATION

| Description | Part no. |
|--------------------------------------|------------------|
| Adaptor for horizontal rail mounting | 11000-002 |

04812021



Example: Lipped horizontal rail adaptor for 19" PSU

11395007

North America

Warwick, RI, USA

Tel +1.401.738.1722

San Diego, CA, USA

Tel +1.858.740.2400

Europe, Middle East & India

Straubenhardt, Germany

Tel +49 7082 794 0

Betschdorf, France

Tel +33 3 88 90 64 90

Warsaw, Poland

Tel +48 22 209 98 35

Hemel Hempstead,

Great Britain

Tel +44 1442 24 04 71

Lainate, Italy

Tel +39 02 932 714 1

Dubai, United Arab Emirates

Tel +971 4 82 38 666

Bangalore, India

Tel +91 80 6715 8900

Istanbul, Turkey

Tel +90 541 368 0941

Asia Pacific

Shanghai, China

Tel +86 21 2412 6943

Singapore

Tel +65 6768 5800

Shin-Yokohama, Japan

Tel +81 45 476 0271

Our powerful portfolio of brands:

CADDY ERICO HOFFMAN RAYCHEM SCHROFF TRACER



nVent.com/SCHROFF