

Adapter Box

RS-485 to RS-232

A485-232

Part Number



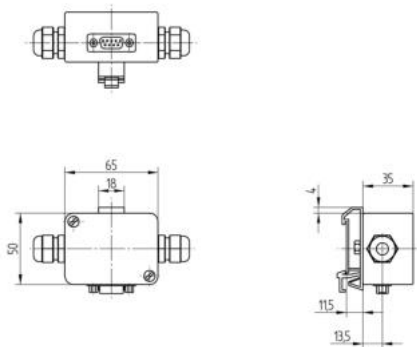
Technical Data

Electrical Data	
Supply Voltage	10...30 V DC
Current Consumption (U _b = 24 V)	< 10 mA
Interface	RS-232/485
Mechanical Data	
Degree of Protection	IP65
Temperature Range	-25...60 °C
Housing Material	Plastic
Scope of delivery	Connection cables
Packaging unit	1 Piece

- Connection cable SUB D, 9-pin included in delivery

Complementary Products

Connection Box for USB Interface AB-USB01
Interface Cable S11-10M



All dimensions in mm (1 mm = 0.03937 Inch)

