

# 1D/2D Code Scanner

## FIS-0004-0102

Part Number



- For static applications
- High depth of focus
- Teach-in

### Technical Data

#### Optical Data

Barcode Density	Low density
Read Range	51...152 mm
Resolution	640 x 480 Pixel
Light Source	Red Light
Wavelength	617 nm
Service Life (T = +25 °C)	40000 h
Max. Ambient Light	3000 Lux
Barcode Printing Contrast	> 20 %

#### Electrical Data

Supply Voltage	5 V DC
Power Consumption	1970 mW
Scan Rate	10 scans/sec
On-/Off-Delay (RS-232)	2,55 s
Temperature Range	0...40 °C
Switching Output	TTL
Number of Switching Outputs	3
Switching Output/Switching Current	10 mA
Network Possibilities	Daisy Chain, Multidrop
Interface	RS-232/422/485
Baud Rate	115200 Bd
Trigger Input	NPN
Signal Input	NPN
Number of Signal Inputs	1
Acoustic signal	yes

#### Mechanical Data

Housing Material	Aluminum
Weight	57 g
Degree of Protection	IP54
Connection	SubD 15-pin

TTL positive/negative switchable



Connection Table No.

09

Control Panel No.

Ba6

Suitable Connection Equipment No.

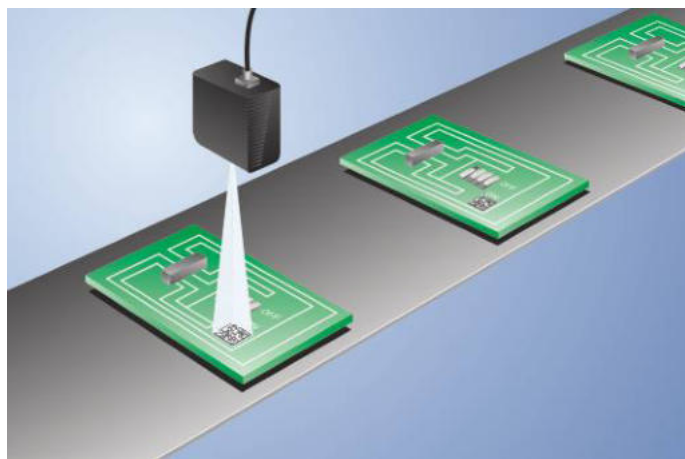
16 | 74

Suitable Mounting Technology No.

430

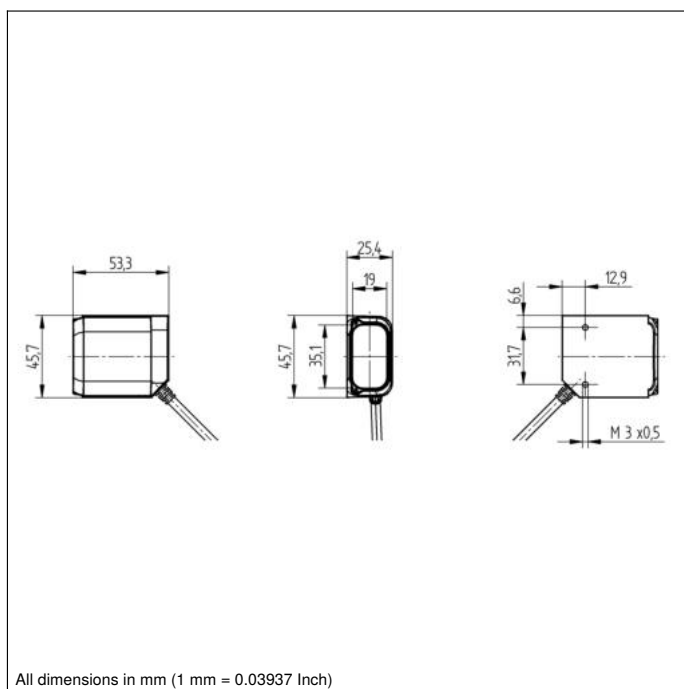
These 2D code scanners are suitable for omnidirectional scanning of 1D and 2D codes. The following code types can be processed:

Code39, Code128, Code93, UPC/EAN, IBM BC412, Interleaved 2 of 5, Codabar, DataMatrix, PDF417, QR-Code, RSS family, Micro PDF.

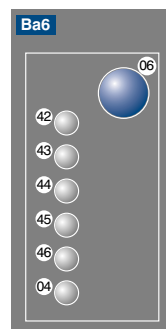


### Complementary Products

Connection Box AB-0003-1
Fieldbus Gateway ZAGxxxN01, EPGG001
Path-Folding Mirror LA26
Protective Housing ZSV-0x-01
Software



## Ctrl. Panel



- 04 = Function Indicator
- 06 = Teach Button
- 42 = Reading Performance 100 %/Good Read
- 43 = Reading Performance 80 %/Status/Trigger
- 44 = Reading Performance 60 %
- 45 = Reading Performance 40 %
- 46 = Reading Performance 20 %

Min. Resolution		Max. Visual Field	Read Range
1D	2D		
Medium Density			
0.19 mm	0.25 mm	61 46 mm	51 mm to 102 mm
0.25 mm	0.38 mm	66 50 mm	43 mm to 119 mm
0.38 mm	0.51 mm	71 53 mm	36 mm to 132 mm
Low Density			
0.25 mm	0.38 mm	107 80 mm	89 mm to 114 mm
0.38 mm	0.51 mm	127 95 mm	69 mm to 127 mm
0.51 mm	0.76 mm	147 110 mm	51 mm to 152 mm

