

Lens

for Digital Camera and weQube with C mount

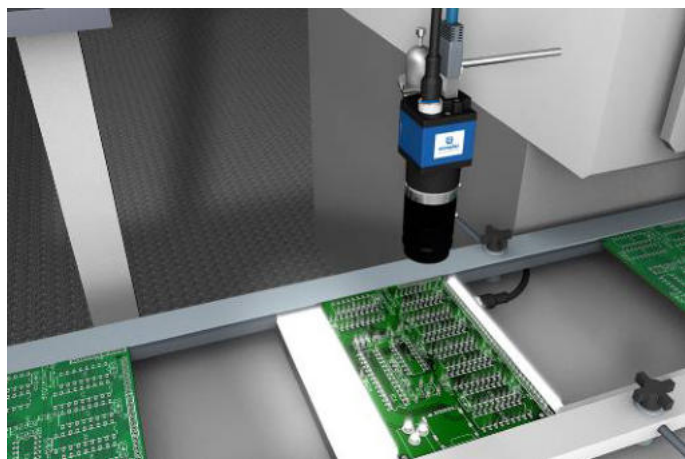
LAC16-14-K01

Part Number



- Adjustable aperture
- Adjustable focus
- Fixed focal length lens with C mount threaded connection

Fixed focal length lenses with C mount threaded connection can be used, for example, on Smart Cameras with C mount connection. Adjustable f-stops and adjustable focus offer greatest possible variability for the implementation of complex vision applications.



Technical Data

Optical Data

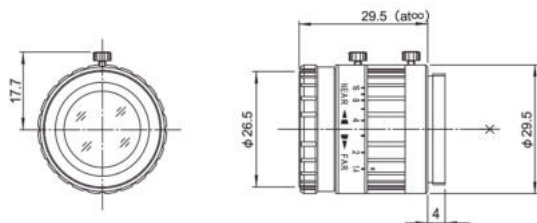
Focal Length	16 mm
--------------	-------

Mechanical Data

Lens thread	C-Mount
Aperture	adjustable
Aperture	arrestable
Adjustable Range Aperture	F 1,4...16
Minimum object distance	100 mm
Filter Screw Size	M25,5 × 0,5 mm
Temperature Range	-10...50 °C
Packaging unit	1 Piece

Complementary Products

Allen Key with Threaded Pins Z0070
Protective Housing ZSZ-0x-01



All dimensions in mm (1 mm = 0.03937 Inch)

Field of vision for Smart Cameras with C-Mount

Working Distance	100 mm	200 mm	600 mm
Visual Field	23 × 15	51 × 33	164 × 105

