

Lens

for Digital Camera and weQube with C mount

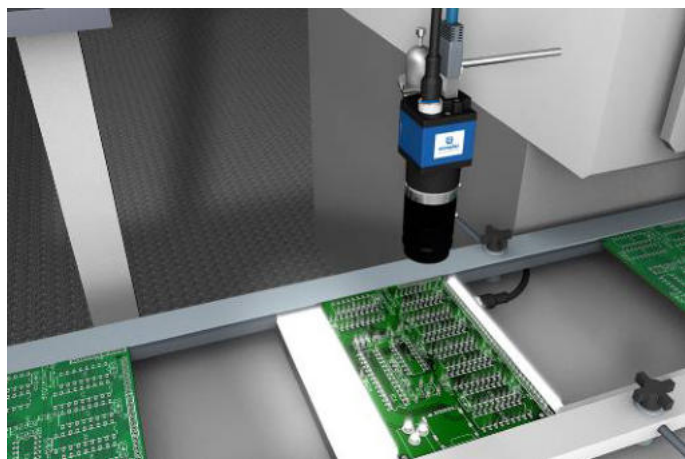
LAC25-14-K02

Part Number



- Adjustable aperture
- Adjustable focus
- Fixed focal length lens with C mount threaded connection

Fixed focal length lenses with C mount threaded connection can be used, for example, on Smart Cameras with C mount connection. Adjustable f-stops and adjustable focus offer greatest possible variability for the implementation of complex vision applications.



Technical Data

Optical Data

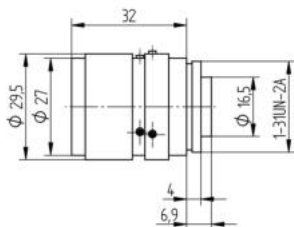
Focal Distance	25 mm
----------------	-------

Mechanical Data

Lens thread	C-Mount
Aperture	adjustable
Aperture	arrestable
Adjustable Range Aperture	F 1,4...22
Minimum object distance	150 mm
Filter Screw Size	M25,5 × 0,5 mm
Temperature Range	-10...50 °C
Packaging unit	1 Piece

Complementary Products

Allen Key with Threaded Pins Z0070
Protective Housing ZSZ-0x-01



All dimensions in mm (1 mm = 0.03937 Inch)

Field of vision for Smart Cameras with C-Mount

Working Distance	200 mm	400 mm	800 mm
Visual Field	31 × 20	67 × 43	139 × 89

