

# Lens

for Digital Camera and weQube with C mount

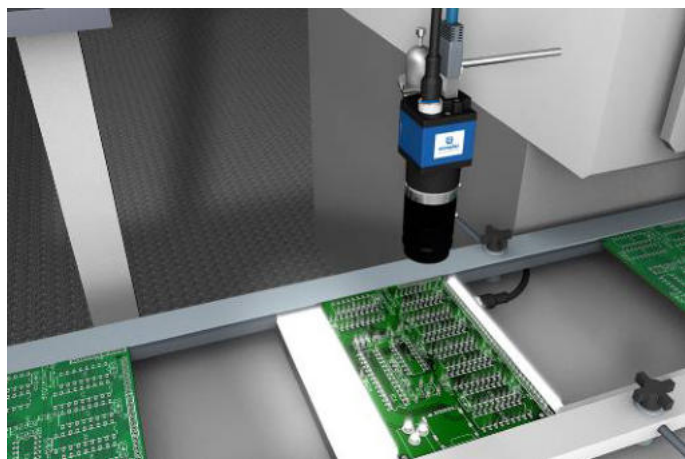
## LAC50-23-K01

Part Number



- Adjustable aperture
- Adjustable focus
- Fixed focal length lens with C mount threaded connection

Fixed focal length lenses with C mount threaded connection can be used, for example, on Smart Cameras with C mount connection. Adjustable f-stops and adjustable focus offer greatest possible variability for the implementation of complex vision applications.

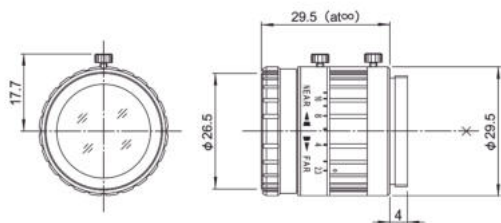


### Technical Data

Optical Data	
Focal Distance	50 mm
Mechanical Data	
Lens thread	C-Mount
Aperture	adjustable
Aperture	arrestable
Adjustable Range Aperture	F 2,3...22
Minimum object distance	500 mm
Filter Screw Size	M25,5 × 0,5 mm
Temperature Range	-10...50 °C
Packaging unit	1 Piece

### Complementary Products

Allen Key with Threaded Pins Z0070
Protective Housing ZSZ-0x-01



All dimensions in mm (1 mm = 0.03937 Inch)

Field of vision for Smart Cameras with C-Mount

Working Distance	600 mm	1000 mm	1500 mm
Visual Field	49 × 31	85 × 54	130 × 83

