

Reflector

Ø 51 mm

RR50SA

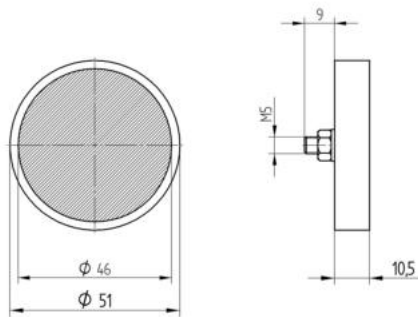
Part Number



Technical Data

Mechanical Data	
Structure	Macro Structure
Mounting Type	Fixing Screw
Material	Plastic
Temperature Range	-20...60 °C
Packaging unit	1 Piece

- With fixing screw



All dimensions in mm (1 mm = 0.03937 Inch)