

Guard Locking Device

Actuator

S2FP200

Part Number



- 1000 N locking force
- RFID encoding

Technical Data

Electrical Data

Sensor Type	Actuator
Temperature Range	0...60 °C
Storage temperature	-10...90 °C

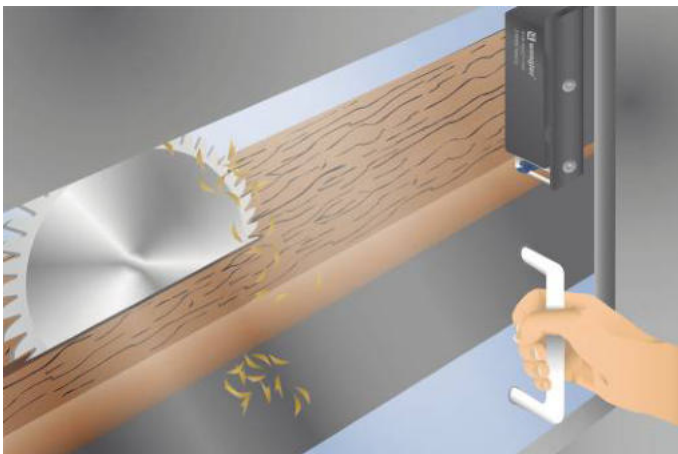
Mechanical Data

Housing Material	Plastic
Degree of Protection	IP65/IP67/IP69

Safety-relevant Data

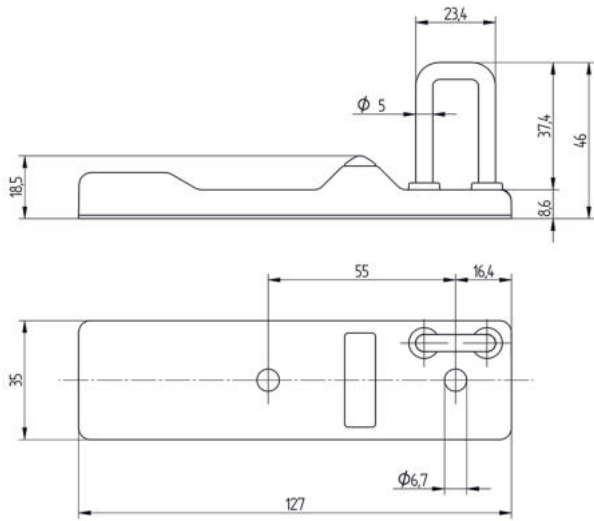
Operating principle	RFID
Applicable lock	S2FP001
	S2FP002
	S2FP003
	S2FP004
	S2FP005
	S2FP006
	S2FP101
	S2FP102
	S2FP103
	S2FP104

The electromechanical guard locking device is distinguished by a high locking force of 1000 N. As a result, only one guard locking device is required in order to fulfill a safety level of category 4 PL e (EN ISO 13849-1). The safety level, as well as reaction time and risk time, remain unchanged when connected in series. Extensive diagnosis functions enhance system availability and simplify installation and maintenance. The unique star handle operating concept is especially well-suited for rotary and sliding doors.



Complementary Products

Software



All dimensions in mm (1 mm = 0.03937 Inch)