

# Emergency Stop Switch

Complete Set

## SEM21N0189

Part Number



- M12 connection
- Simple installation on profiles and walls
- Slender housing
- Unlocking by turning left or right

### Technical Data

#### Electrical Data

|                             |                        |
|-----------------------------|------------------------|
| Temperature Range           | -25...70 °C            |
| Storage temperature         | -25...85 °C            |
| Service Life (nominal load) | 50000 Switching Cycles |
| Protection Class            | II                     |

#### Mechanical Data

|                      |                   |
|----------------------|-------------------|
| Housing Material     | Plastic           |
| Service Life         | 50000 Activations |
| Bounce time          | < 10 ms           |
| Degree of Protection | IP65              |
| Installation Type    | Setting up        |
| Unlocking            | turning           |
| Connection           | M12 × 1; 8-pin    |

#### Safety-relevant Data

|                                      |         |
|--------------------------------------|---------|
| B10d Switching Cycles                | 250 000 |
| Number of positively driven contacts | 2       |
| NO Contacts                          | 1       |

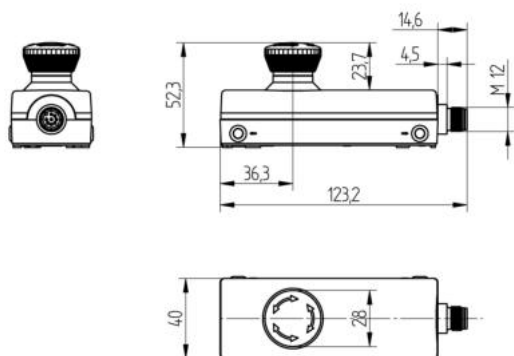
#### Function

|                              |     |
|------------------------------|-----|
| Switching position indicator | yes |
|------------------------------|-----|

|                                   |            |
|-----------------------------------|------------|
| Connection Diagram No.            | <b>P05</b> |
| Suitable Connection Equipment No. | <b>89</b>  |

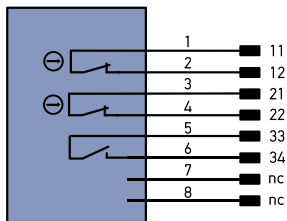
### Complementary Products

|                                   |
|-----------------------------------|
| Safety Relay SR4B3B01S, SR4D3B01S |
| Software                          |



All dimensions in mm (1 mm = 0.03937 Inch)

P05



#### Legend

|          |  |       |                                |
|----------|--|-------|--------------------------------|
| +        | Supply Voltage +                           | PT    | Platinum measuring resistor    |
| -        | Supply Voltage 0 V                         | nc    | not connected                  |
| ~        | Supply Voltage (AC Voltage)                | U     | Test Input                     |
| A        | Switching Output (NO)                      | U     | Test Input inverted            |
| Ā        | Switching Output (NC)                      | W     | Trigger Input                  |
| V        | Contamination/Error Output (NO)            | W-    | Ground for the Trigger Input   |
| V̄       | Contamination/Error Output (NC)            | O     | Analog Output                  |
| E        | Input (analog or digital)                  | O-    | Ground for the Analog Output   |
| T        | Teach Input                                | BZ    | Block Discharge                |
| Z        | Time Delay (activation)                    | AWV   | Valve Output                   |
| S        | Shielding                                  | a     | Valve Control Output +         |
| RxD      | Interface Receive Path                     | b     | Valve Control Output 0 V       |
| TxD      | Interface Send Path                        | SY    | Synchronization                |
| RDY      | Ready                                      | SY-   | Ground for the Synchronization |
| GND      | Ground                                     | E+    | Receiver-Line                  |
| CL       | Clock                                      | S+    | Emitter-Line                   |
| E/A      | Output/Input programmable                  | ±     | Grounding                      |
| IO-Link  | IO-Link                                    | SnR   | Switching Distance Reduction   |
| PoE      | Power over Ethernet                        | Rx+/- | Ethernet Receive Path          |
| IN       | Safety Input                               | Tx+/- | Ethernet Send Path             |
| OSSD     | Safety Output                              | Bus   | Interfaces-Bus A(+)/B(-)       |
| Signal   | Signal Output                              | La    | Emitted Light disengageable    |
| BL-D+/-  | Ethernet Gigabit bidirect. data line (A-D) | Mag   | Magnet activation              |
| EN0.5SAZ | Encoder 0-pulse 0-0 (TTL)                  | RES   | Input confirmation             |
|          |  | EDM   | Contacting Monitoring          |

|                                      |                     |
|--------------------------------------|---------------------|
| ENAR54Z                              | Encoder A/Ā (TTL)   |
| ENB54Z                               | Encoder B/B̄ (TTL)  |
| ENa                                  | Encoder A           |
| ENb                                  | Encoder B           |
| AMIN                                 | Digital output MIN  |
| AMAX                                 | Digital output MAX  |
| AOK                                  | Digital output OK   |
| SY In                                | Synchronization In  |
| SY OUT                               | Synchronization OUT |
| OLt                                  | Brightness output   |
| M                                    | Maintenance         |
| rsv                                  | reserved            |
| Wire Colors according to DIN IEC 757 |                     |
| BK                                   | Black               |
| BN                                   | Brown               |
| RD                                   | Red                 |
| OG                                   | Orange              |
| YE                                   | Yellow              |
| GN                                   | Green               |
| BU                                   | Blue                |
| VT                                   | Violet              |
| GY                                   | Grey                |
| WH                                   | White               |
| PK                                   | Pink                |
| GNYE                                 | Green/Yellow        |