

Baffle Plate for M18 × 1

Z0021

Part Number



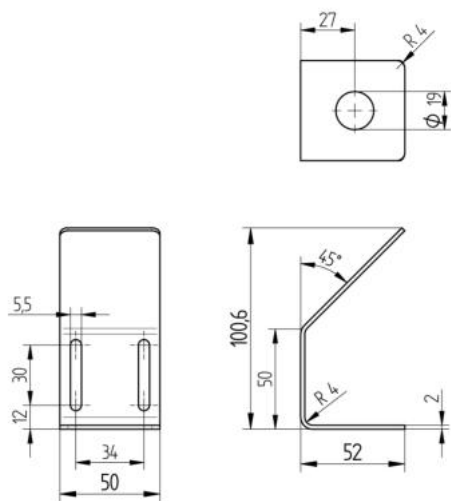
Technical Data

Mechanical Data

Material	Stainless Steel
Deflection about 90°	yes
Packaging unit	1 Piece

- Deflection about 90°
- For M18 × 1

Use of the baffle plate does not influence the range or sonic cone of the ultrasonic sensors. The mounting clearance between the sensor's active surface and the baffle plate must be subtracted from the sensor's maximum range.



All dimensions in mm (1 mm = 0.03937 Inch)

