

# Baffle Plate for M30 × 1,5

## Z0024

Part Number



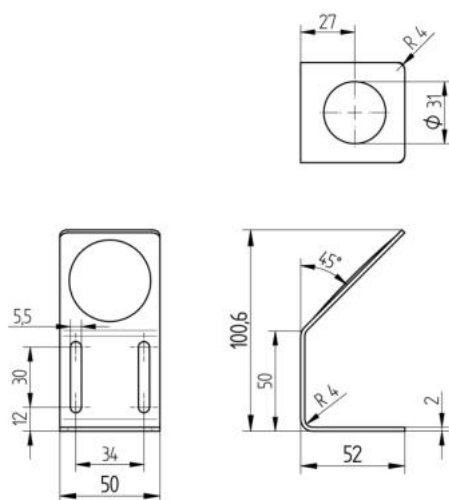
### Technical Data

#### Mechanical Data

Material	Stainless Steel
Deflection about 90°	yes
Focusing the sonic cone	yes
Packaging unit	1 Piece

- Deflection about 90°
- Focussing the ultrasonic cone
- For M30 × 1,5

Use of the baffle plate does not influence the range of the ultrasonic sensors. Due to focusing, the sonic cone becomes roughly 3° narrower. The mounting clearance between the sensor's active surface and the baffle plate must be subtracted from the sensor's maximum range.



All dimensions in mm (1 mm = 0.03937 Inch)

