

# Mounting Console with Fixed Limit Stop for M8 × 1; Non-Flush Mounting

## Z08M003

Part Number

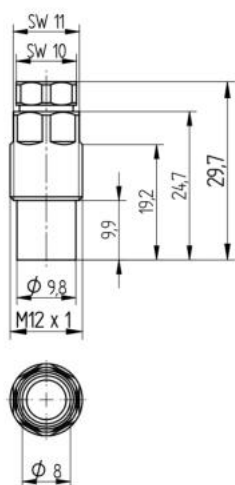


### Technical Data

#### Mechanical Data

Material	Stainless Steel; Plastic
Threaded sleeve tightening torque	max. 2 Nm
Clamp retainer tightening torque	0,3 Nm
Packaging unit	1 Piece
Mounting Number	<b>203</b>

- For M8 × 1, non-flush
- Integrated, fixed limit stop for precise sensor positioning
- No reduction of the switching distance
- Time savings thanks to easy installation



All dimensions in mm (1 mm = 0.03937 Inch)

