

Muting set

2 Sensors, Cross Muting

Z2MG001

Part Number



- Muting for safe transport to and from the danger zone
- Muting set for cross muting
- Plug & play thanks to the included connection box
- Preassembled muting set for fast initial start-up

Technical Data

Electrical Data

Temperature Range	-30...60 °C
Light Source	Red Light
Range	0,01...3,5 m
Switching Frequency	2000 Hz

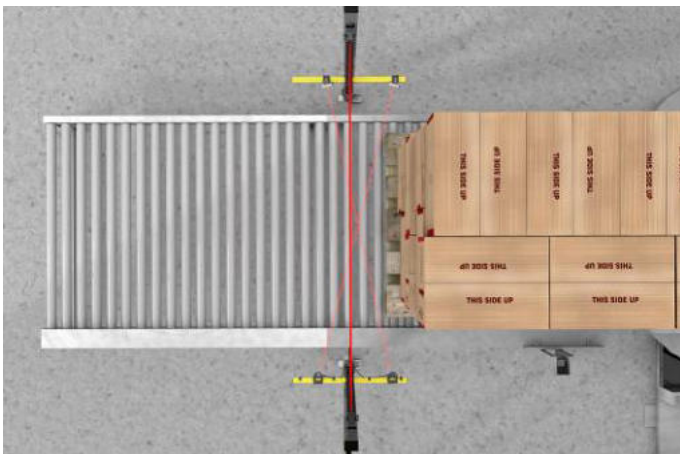
Mechanical Data

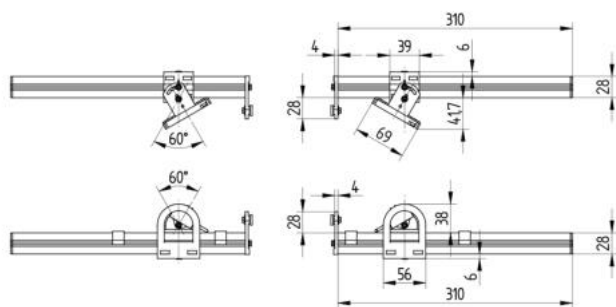
Housing Material	Aluminum
Connection	M12 × 1; 4-pin
Cable Length	100 cm
Degree of Protection	IP67
Muting boom length	300 mm
PNP NC	yes

Scope of delivery	Muting sensor including mounting Reflector including mounting Connection box for muting sensors Muting boom
-------------------	--

{Muting-Art}	2-sensor cross muting
Muting sensor	2 × P1KL020
Reflector	2 × RE6040BA
Muting boom	4 Pieces

The sensors are set up for cross muting with this pre-assembled muting set. This permits quick implementation of muting applications together with series SEFG safety light curtains or series SEFB multi-beam safety light curtains. Access protection for transport to and from the danger zone can be implemented safely and efficiently with the cross muting set.





All dimensions in mm (1 mm = 0.03937 Inch)

