

Protection Column

with deflection mirror

Z2SU003

Part Number



- **Effective protection against mechanical damage**
- **Efficient zone protection with just one safety device**
- **Flexible installation: install on the ground or walls**
- **Simple alignment via innovative mounting feature**

The protection column for deflection mirrors provides secure protection against bumps, collisions and machines. Mirror columns are used in connection with safety light curtains or safety light arrays. They direct the beams from emitter to receiver along multiple sides of a system or machine. This can be used to efficiently secure entire areas with just one safety device. A free-standing setup is possible using the type ZMBSZ0001 floor mounting. The type ZMBSZ0002 wall mounting is suitable for horizontal setups.

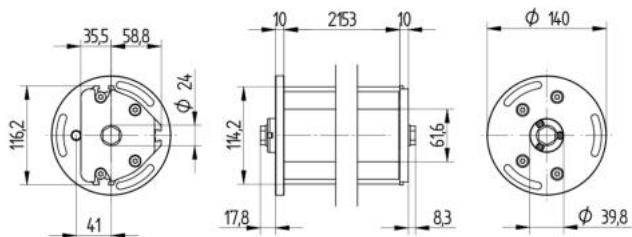
Technical Data

Mechanical Data

Housing Material	Aluminum
Disc Material	Mirrored glass
Mounting Space (EBR)	2153 mm
Suitable Mounting Technology No.	710

Complementary Products

Floor Mounting ZMBSZ0001
Mounting Bracket BEF-SET-36
Mounting Bracket ZEMX002
Wall Mounting ZMBSZ0002



All dimensions in mm (1 mm = 0.03937 Inch)