

Path-Folding Mirror

Z2UG001

Part Number

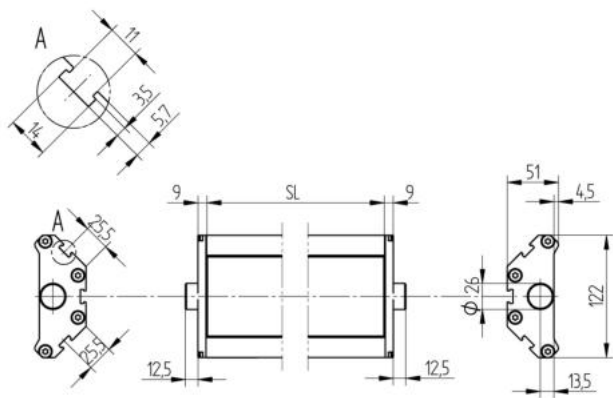


Technical Data

| Mechanical Data | |
|----------------------------------|----------------|
| Housing Material | Aluminum |
| Disc Material | Mirrored glass |
| Mirror Length (SL) | 80 mm |
| Scope of delivery | BEF-SET-33 |
| Packaging unit | 1 Piece |
| Suitable Mounting Technology No. | 700 810 |

- Reflector area: 80 mm

Mounting with BEF-SET-33, ZEMX001 or ZEMX002.



All dimensions in mm (1 mm = 0.03937 Inch)

