

Reflector

Z90R007

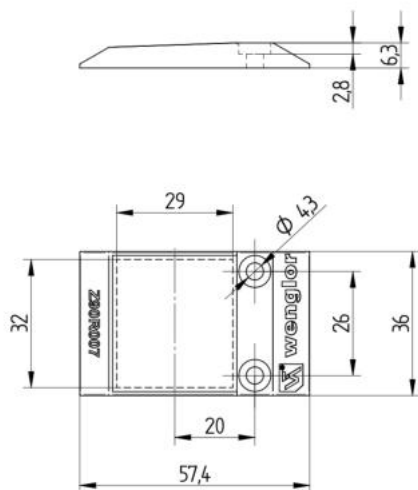
Part Number



Technical Data

Mechanical Data	
Structure	Continuous Structure
Mounting Type	Fixing Holes
Orientation with respect to the sensor	vertical
Material	Plastic
Temperature Range	-30...60 °C
Packaging unit	1 Piece

- With fixing holes



All dimensions in mm (1 mm = 0.03937 Inch)

We recommend M4 mounting screws in accordance with DIN 960 for flush mounting.