

# Reflector

## Z90R008

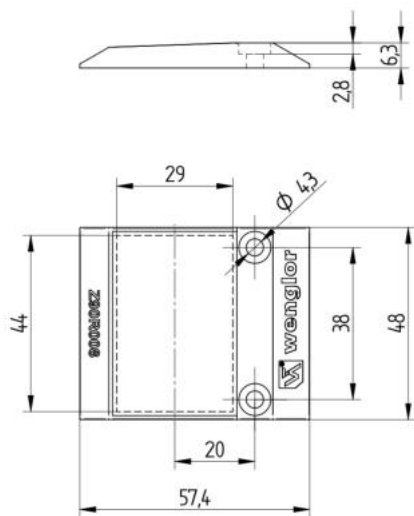
Part Number



### Technical Data

Mechanical Data	
Structure	Continuous Structure
Mounting Type	Fixing Holes
Orientation with respect to the sensor	vertical
Material	Plastic
Temperature Range	-30...60 °C
Packaging unit	1 Piece

- With fixing holes



All dimensions in mm (1 mm = 0.03937 Inch)