

Adapter for 1/2"-CIP connections

ZH4C006

Part Number

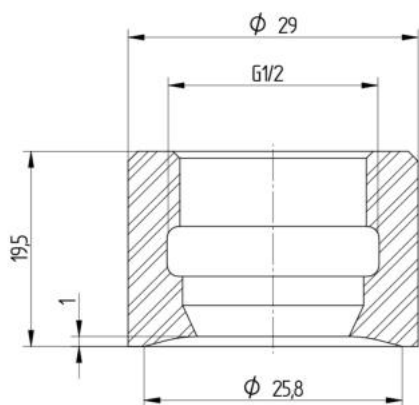


Technical Data

Mechanical Data

Height	19,5 mm
Material	Stainless steel 1.4404
Mounting	flush
Connection	G 1/2" CIP-capable
Packaging unit	1 Piece
Mounting Number	906

This weld-in adapter is suitable for 1/2" CIP connections.



All dimensions in mm (1 mm = 0.03937 Inch)