

# Adapter

for 1/4" connections without undercut

## ZH4C007

Part Number

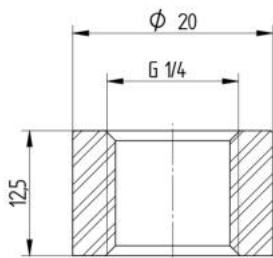
### Technical Data

#### Mechanical Data

Height	12,5 mm
Material	Stainless steel 1.4404
Mounting	flush
Connection	G 1/4"
Packaging unit	1 Piece
Mounting Number	919



This weld-in adapter is suitable for 1/4" connections without undercut.



All dimensions in mm (1 mm = 0.03937 Inch)