

Adapter for 1/2" Hygienic-Design Connections

ZH4C008

Part Number

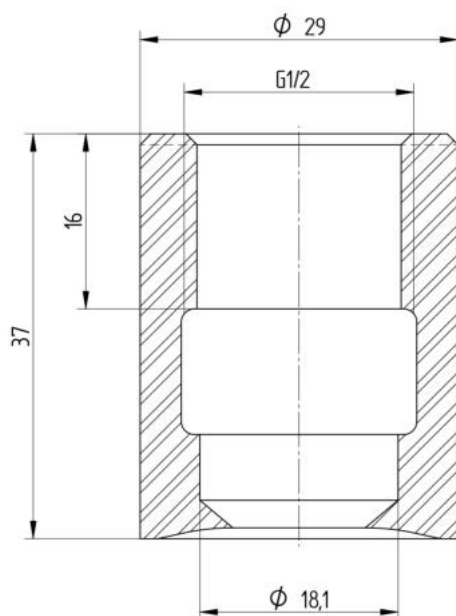


Technical Data

Mechanical Data

Height	37 mm
Material	Stainless steel 1.4404
Mounting	flush
Connection	G 1/2" hygienic design
Packaging unit	1 Piece
Mounting Number	922

This weld-in adapter is suitable for 1/2" hygienically designed connections.



All dimensions in mm (1 mm = 0.03937 Inch)