

# Adapter for 3/4" connections

## ZH4C011

Part Number

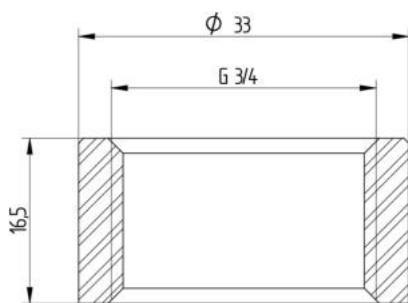


### Technical Data

#### Mechanical Data

Height	16,5 mm
Material	Stainless steel 1.4404
Mounting	flush
Connection	G3/4"
Packaging unit	1 Piece
Mounting Number	920

This weld-in adapter is suitable for 3/4" connections.



All dimensions in mm (1 mm = 0.03937 Inch)