

Protective Housing for MSL

ZLSS003

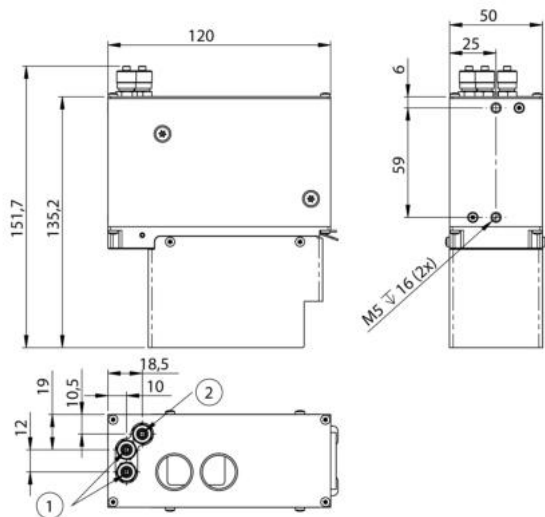
Part Number



Technical Data

Mechanical Data	
Material	Stainless Steel; AL
Medium	Water; air
Pressure Resistance	< 2 bar
Weight	600 g
Scope of delivery	ZLSE003
Packaging unit	1 Piece

The use of protective discs results in an offset in the Z direction of the sensor's measuring range. The amount of offset depends on the sensor model. Furthermore, linearity error is influenced by up to 0.1%.



1 = Tubing connection for cooling
2 = Tubing connection for air flushing
For 4 mm tubing ID / 6 mm tubing OD
All dimensions in mm (1 mm = 0.03937 Inch)