

# XCKN2506G11

Limit switch, Limit switches XC Standard,  
XCKN, cat's whisker, 1NC+1 NO, slow, Pg11



## Main

|                               |  |
|-------------------------------|--|
| Range of product              | Telemecanique Limit switches XC Standard |
| Series name                   | Standard format                          |
| Product or component type     | Limit switch                             |
| Device short name             | XCKN                                     |
| Sensor design                 | Compact                                  |
| Body type                     | Fixed                                    |
| Head type                     | Multi-directional head                   |
| Material                      | Plastic                                  |
| Body material                 | Plastic                                  |
| Head material                 | Plastic                                  |
| Fixing mode                   | By the body                              |
| Movement of operating head    | Multi-directional                        |
| Type of operator              | Spring return cat's whisker              |
| Type of approach              | Multi-directional approach               |
| Cable entry                   | 1 entry tapped for Pg 11 cable gland     |
| Number of poles               | 2  |
| Contacts type and composition | 1 NC + 1 NO                              |
| Contact operation             | Slow-break, break before make            |

## Complementary

|  |  |
|--|--|
| Switch actuation                       | By any moving part   |
| Electrical connection                  | Screw-clamp terminals, clamping capacity: 1 x 0.5...2 x 2.5 mm <sup>2</sup>  |
| Contacts insulation form               | Zb   |
| Positive opening                       | Without  |
| Minimum torque for tripping            | 0.13 N.m   |
| Maximum actuation speed                | 1 m/s  |
| Contact code designation               | A300, AC-15 (Ue = 240 V), Ie = 3 A, Ithe = 10 A conforming to EN/IEC 60947-5-1 appendix A<br>R300, DC-13 (Ue = 250 V), Ie = 0.1 A conforming to EN/IEC 60947-5-1 appendix A  |
| [Ui] rated insulation voltage          | 300 V conforming to UL 508<br>500 V (pollution degree 3) conforming to IEC 60947-1<br>300 V conforming to CSA C22.2 No 14  |
| [Uimp] rated impulse withstand voltage | 6 kV conforming to IEC 60664<br>6 kV conforming to IEC 60947-1   |
| Short-circuit protection               | 10 A cartridge fuse, type gG   |
| Electrical durability                  | 5000000 Cycles, DC-13, 120 V, 4 W, operating rate <60 cyc/mn, load factor: 0.5 conforming to IEC 60947-5-1 appendix C<br>5000000 Cycles, DC-13, 24 V, 10 W, operating rate <60 cyc/mn, load factor: 0.5 conforming to IEC 60947-5-1 appendix C<br>5000000 cycles, DC-13, 48 V, 7 W, operating rate <60 cyc/mn, load factor: 0.5 conforming to IEC 60947-5-1 appendix C |
| Mechanical durability                  | 5000000 cycles   |
| Width                                  | 30 mm  |
| Height                                 | 197 mm   |
| Depth                                  | 30 mm  |
| Net weight                             | 0.135 kg   |
| Terminals description ISO n°1          | (13-14)NO<br>(21-22)NC   |

## Environment

|                                       |   |
|---------------------------------------|---|
| Shock resistance                      | 45 gn for 11 ms conforming to IEC 60068-2-27  |
| Vibration resistance                  | 25 gn (f= 10...500 Hz) conforming to IEC 60068-2-6                                      |
| IP degree of protection               | IP65 conforming to IEC 60529  |
| IK degree of protection               | IK04 conforming to EN 50102   |
| Overvoltage category                  | Class II conforming to IEC 61140<br>Class II conforming to NF C 20-030                  |
| Ambient air temperature for operation | -25...70 °C   |
| Ambient air temperature for storage   | -40...70 °C   |
| Protective treatment                  | TC  |
| Product certifications                | CCC[RETURN]CSA[RETURN]UL  |
| Standards                             | UL 508<br>EN 60947-5-1<br>EN 60204-1<br>CSA C22.2 No 14<br>IEC 60204-1<br>IEC 60947-5-1 |

## Packing Units

|                              |         |
|------------------------------|---------|
| Unit Type of Package 1       | PCE     |
| Number of Units in Package 1 | 1       |
| Package 1 Height             | 11 cm   |
| Package 1 Width              | 16 cm   |
| Package 1 Length             | 30.8 cm |
| Package 1 Weight             | 72.0 g  |

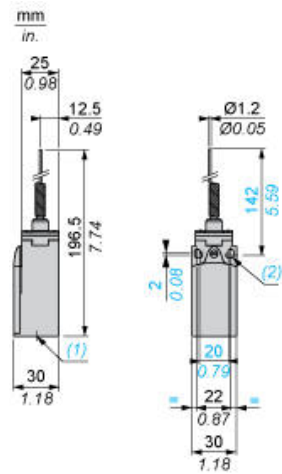
## Offer Sustainability

|  |   |
|--|---|
| Sustainable offer status                   | Green Premium product   |
| Circularity Profile                        | No need of specific recycling operations  |
| California proposition 65                  | WARNING: This product can expose you to chemicals including: Diisononyl phthalate (DINP), which is known to the State of California to cause cancer, and Di-isodecyl phthalate (DIDP), which is known to the State of California to cause birth defects or other reproductive harm. For more information go to <a href="http://www.P65Warnings.ca.gov">www.P65Warnings.ca.gov</a> |
| For all Reach Rohs enquiries contact us at | <a href="mailto:sustainability@tesensors.com">sustainability@tesensors.com</a>  |

## Contractual warranty

|          |           |
|----------|-----------|
| Warranty | 18 months |
|----------|-----------|

## Dimensions



---

Mounting with Cable Entry

---

Position of Cable Gland



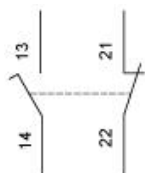
- (1) Recommended  
(2) To be avoided

---

## Wiring Diagram

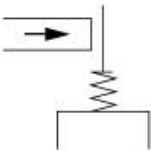
---

2-pole N/C + N/O Break before Make, Slow Break



Characteristics of Actuation

Switch Actuation by Any Moving Part



Functionnal Diagram

