

## Highly insulated module

### Features

- Electrical features
  - $V_{CES} = 4500\text{ V}$
  - $I_{C\text{nom}} = 1200\text{ A} / I_{CRM} = 2400\text{ A}$
  - High surge current capability
  - High dynamic robustness
  - High DC stability
- Mechanical features
  - ALSiC base plate for increased thermal cycling capability
  - High creepage and clearance distances
  - Package with CTI > 600
  - Package with enhanced insulation of 10.4 kV AC 60 s



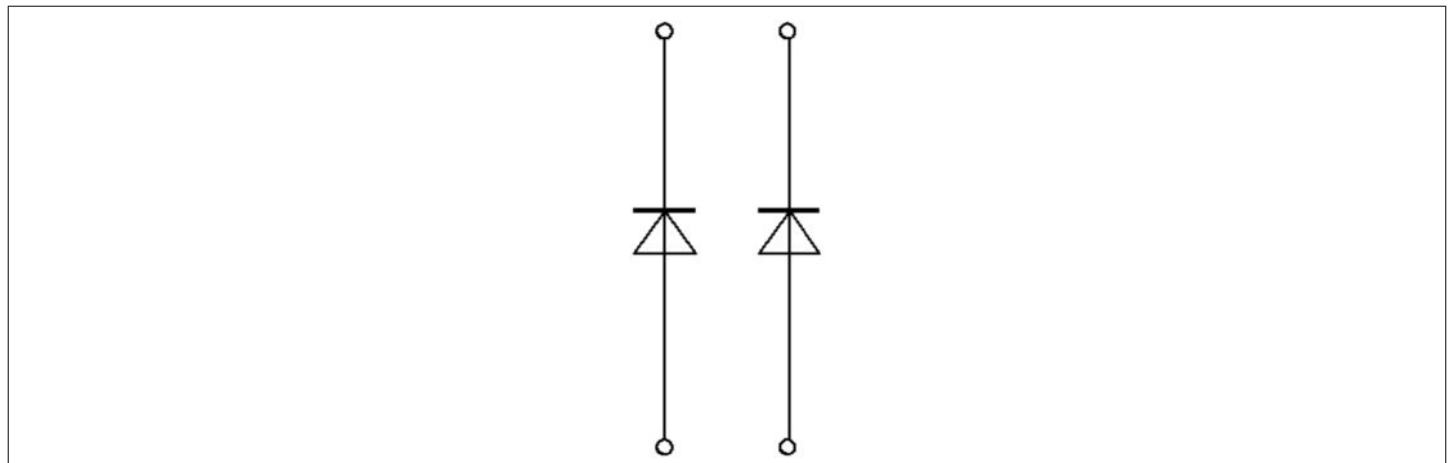
### Potential applications

- Wind turbines
- Traction drives
- Multi-level inverter
- Motor drives
- Medium-voltage converters
- High-power converters

### Product validation

- Qualified for industrial applications according to the relevant tests of IEC 60747, 60749 and 60068

### Description



## Table of contents

	<b>Description</b> .....	1
	<b>Features</b> .....	1
	<b>Potential applications</b> .....	1
	<b>Product validation</b> .....	1
	<b>Table of contents</b> .....	2
<b>1</b>	<b>Package</b> .....	3
<b>2</b>	<b>Diode, Inverter</b> .....	3
<b>3</b>	<b>Characteristics diagrams</b> .....	5
<b>4</b>	<b>Circuit diagram</b> .....	7
<b>5</b>	<b>Package outlines</b> .....	8
<b>6</b>	<b>Module label code</b> .....	9
	<b>Revision history</b> .....	10
	<b>Disclaimer</b> .....	11

## 1 Package

**Table 1** Insulation coordination

Parameter	Symbol	Note or test condition	Values	Unit
Isolation test voltage	$V_{ISOL}$	RMS, $f = 50$ Hz, $t = 60$ s	10.4	kV
Partial discharge extinction voltage	$V_{isol}$	RMS, $f = 50$ Hz, $Q_{PD} \leq 10$ pC	3.5	kV
DC stability	$V_{CE(D)}$	$T_{vj}=25^{\circ}\text{C}$ , 100 Fit	3000	V
Material of module baseplate			AlSiC	
Internal isolation		basic insulation (class 1, IEC 61140)	AlN	
Creepage distance	$d_{Creep}$	terminal to heatsink	64.0	mm
Creepage distance	$d_{Creep}$	terminal to terminal	56.0	mm
Clearance	$d_{Clear}$	terminal to heatsink	40.0	mm
Clearance	$d_{Clear}$	terminal to terminal	26.0	mm
Comparative tracking index	$CTI$		> 600	

**Table 2** Characteristic values

Parameter	Symbol	Note or test condition	Values			Unit	
			Min.	Typ.	Max.		
Stray inductance module	$L_{sCE}$			25		nH	
Module lead resistance, terminals - chip	$R_{AA'+CC'}$	$T_C=25^{\circ}\text{C}$ , per switch		0.37		m $\Omega$	
Storage temperature	$T_{stg}$		-55		125	$^{\circ}\text{C}$	
Mounting torque for module mounting	$M$	- Mounting according to valid application note	M6, Screw	4.25		5.75	Nm
Terminal connection torque	$M$	- Mounting according to valid application note	M8, Screw	8		10	Nm
Weight	$G$			1000		g	

Note: Dynamic Data valid in conjunction with FZ1200R45KL3\_B5 module

## 2 Diode, Inverter

**Table 3** Maximum rated values

Parameter	Symbol	Note or test condition	Values	Unit
Repetitive peak reverse voltage	$V_{RRM}$	$T_{vj} = -40^{\circ}\text{C}$	4500	V
		$T_{vj} = 25^{\circ}\text{C}$	4500	
		$T_{vj} = 125^{\circ}\text{C}$	4500	

(table continues...)

**Table 3 (continued) Maximum rated values**

Parameter	Symbol	Note or test condition	Values	Unit	
Continuous DC forward current	$I_F$		1200	A	
Repetitive peak forward current	$I_{FRM}$	$t_P = 1 \text{ ms}$	2400	A	
$I^2t$ - value	$I^2t$	$t_P = 10 \text{ ms}, V_R = 0 \text{ V}$	$T_{vj} = 125 \text{ }^\circ\text{C}$	570	$\text{kA}^2\text{s}$
Maximum power dissipation	$P_{RQM}$		$T_{vj} = 125 \text{ }^\circ\text{C}$	2400	kW
Minimum turn-on time	$t_{onmin}$		10	$\mu\text{s}$	

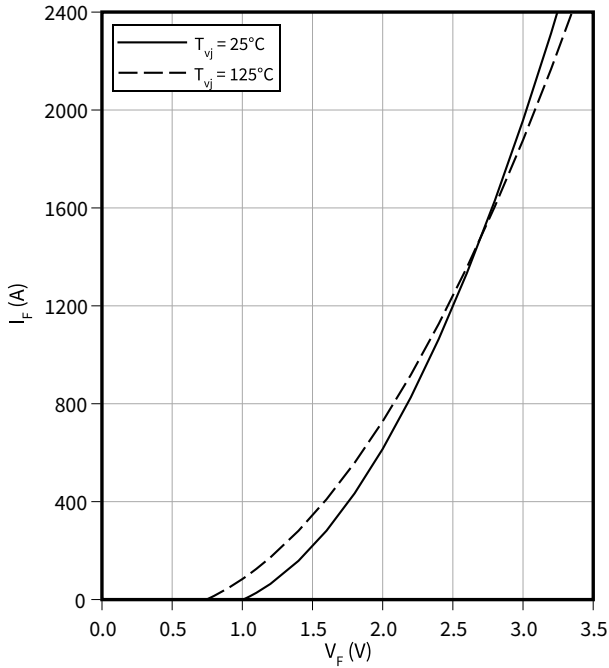
**Table 4 Characteristic values**

Parameter	Symbol	Note or test condition	Values			Unit
			Min.	Typ.	Max.	
Forward voltage	$V_F$	$I_F = 1200 \text{ A}, V_{GE} = 0 \text{ V}$	$T_{vj} = 25 \text{ }^\circ\text{C}$	2.50	3.10	V
			$T_{vj} = 125 \text{ }^\circ\text{C}$	2.50	3.00	
Peak reverse recovery current	$I_{RM}$	$V_R = 2800 \text{ V}, I_F = 1200 \text{ A}, V_{GE} = -15 \text{ V}, -di_F/dt = 5000 \text{ A}/\mu\text{s} (T_{vj} = 125 \text{ }^\circ\text{C})$	$T_{vj} = 25 \text{ }^\circ\text{C}$	1500		A
			$T_{vj} = 125 \text{ }^\circ\text{C}$	1700		
Recovered charge	$Q_r$	$V_R = 2800 \text{ V}, I_F = 1200 \text{ A}, V_{GE} = -15 \text{ V}, -di_F/dt = 5000 \text{ A}/\mu\text{s} (T_{vj} = 125 \text{ }^\circ\text{C})$	$T_{vj} = 25 \text{ }^\circ\text{C}$	1150		$\mu\text{C}$
			$T_{vj} = 125 \text{ }^\circ\text{C}$	2100		
Reverse recovery energy	$E_{rec}$	$V_R = 2800 \text{ V}, I_F = 1200 \text{ A}, V_{GE} = -15 \text{ V}, -di_F/dt = 5000 \text{ A}/\mu\text{s} (T_{vj} = 125 \text{ }^\circ\text{C})$	$T_{vj} = 25 \text{ }^\circ\text{C}$	1750		mJ
			$T_{vj} = 125 \text{ }^\circ\text{C}$	3550		
Thermal resistance, junction to case	$R_{thJC}$	per diode			17.0	K/kW
Thermal resistance, case to heat sink	$R_{thCH}$	per diode		16.0		K/kW
Temperature under switching conditions	$T_{vj op}$		-50		125	$^\circ\text{C}$

### 3 Characteristics diagrams

**Forward characteristic (typical), Diode, Inverter**

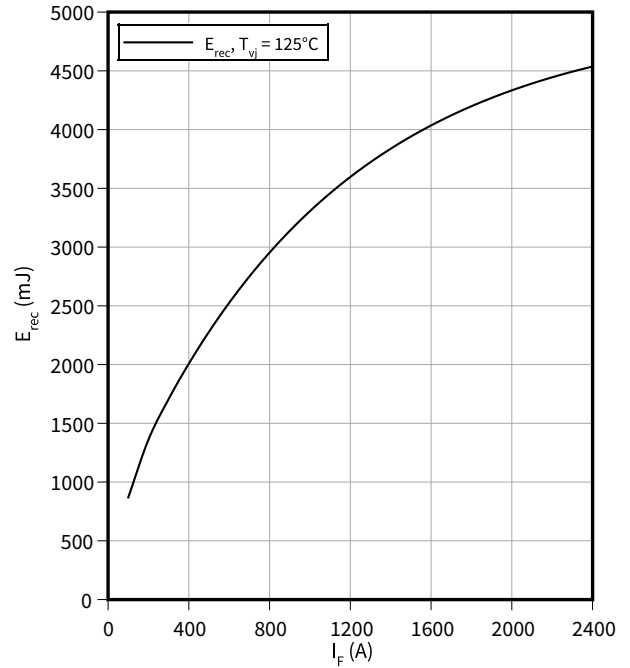
$$I_F = f(V_F)$$



**Switching losses (typical), Diode, Inverter**

$$E_{rec} = f(I_F)$$

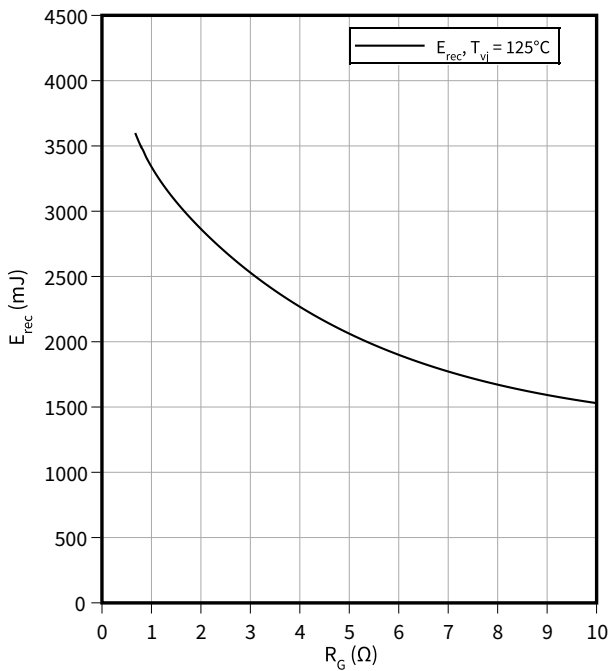
$$V_{CE} = 2800 \text{ V}, R_{Gon} = R_{Gon}(\text{IGBT})$$



**Switching losses (typical), Diode, Inverter**

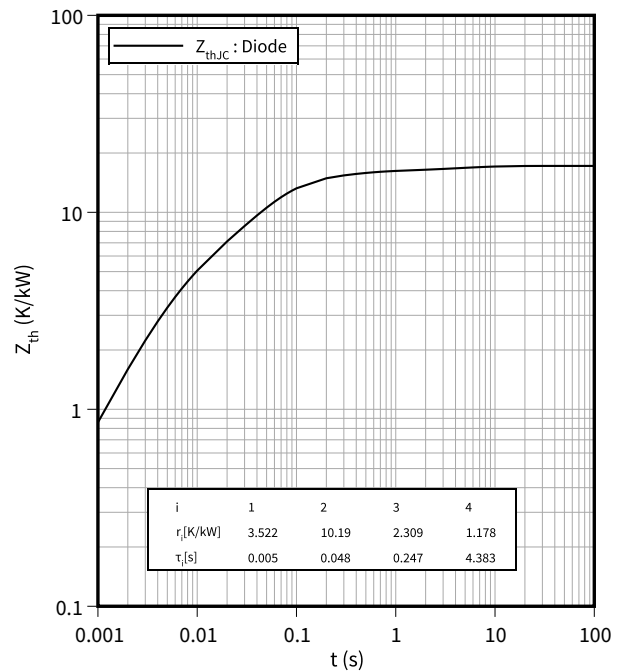
$$E_{rec} = f(R_G)$$

$$V_{CE} = 2800 \text{ V}, I_F = 1200 \text{ A}$$



**Transient thermal impedance, Diode, Inverter**

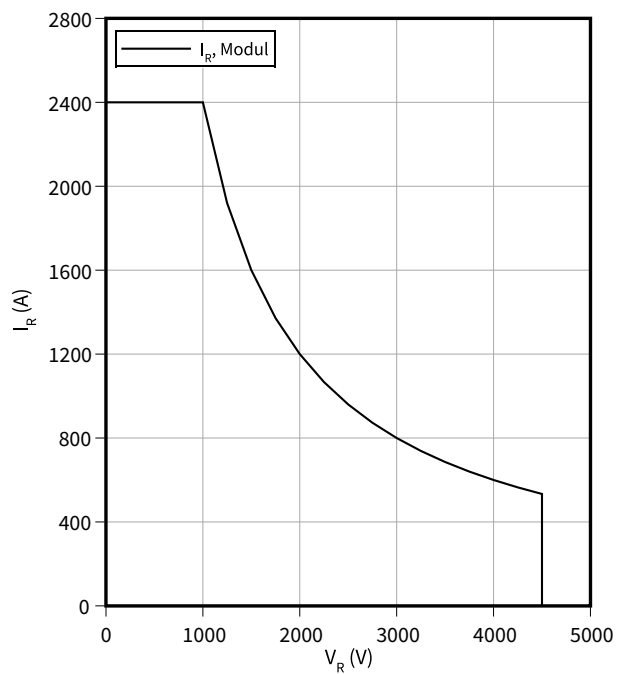
$$Z_{th} = f(t)$$



**Safe operating area (SOA), Diode, Inverter**

$$I_R = f(V_R)$$

$$T_{vj} = 125\text{ °C}$$



## 4 Circuit diagram

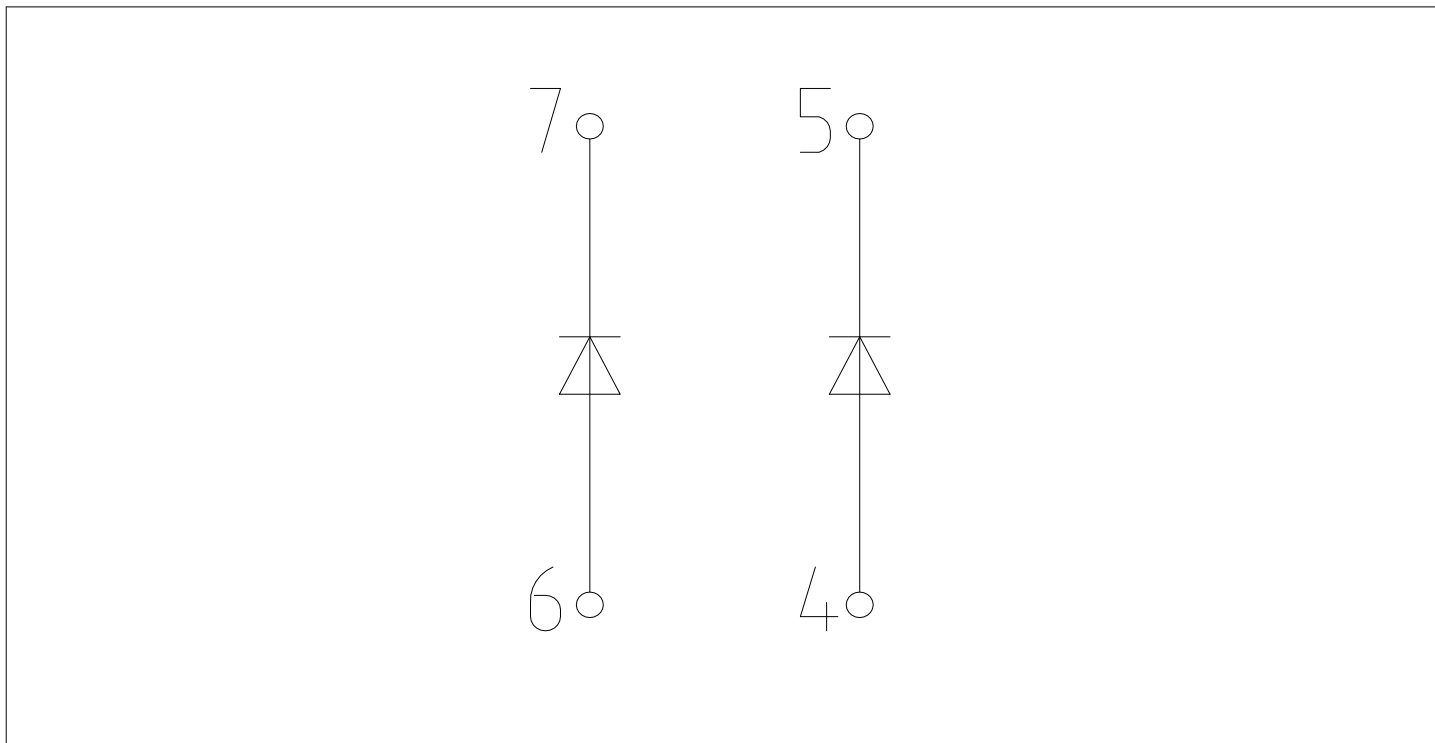


Figure 1

5 Package outlines

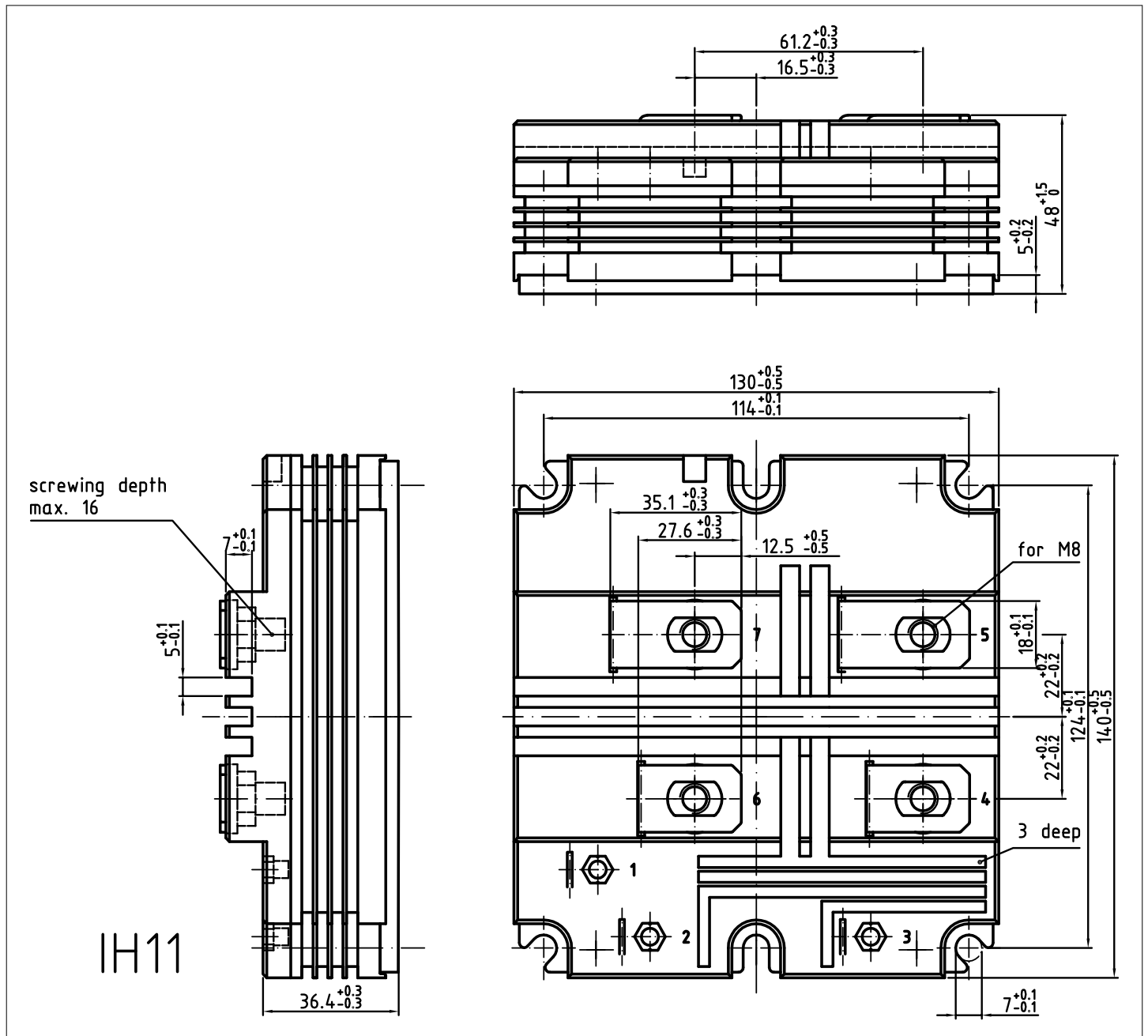

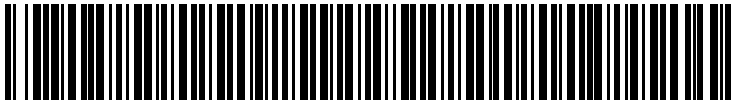


Figure 2



## 6 Module label code

<b>Module label code</b>			
Code format	Data Matrix	Barcode Code128	
Encoding	ASCII text	Code Set A	
Symbol size	16x16	23 digits	
Standard	IEC24720 and IEC16022	IEC8859-1	
Code content	<i>Content</i> Module serial number Module material number Production order number Date code (production year) Date code (production week)	<i>Digit</i> 1 - 5 6 - 11 12 - 19 20 - 21 22 - 23	<i>Example</i> 71549 142846 55054991 15 30
Example	<div style="display: flex; justify-content: space-around; align-items: center;"> <div style="text-align: center;">   71549142846550549911530 </div> <div style="text-align: center;">   71549142846550549911530 </div> </div>		

**Figure 3**

## Revision history

Document revision	Date of release	Description of changes
V1.0	2012-06-05	Target datasheet
V1.1	2012-09-07	Target datasheet
V2.0	2014-05-26	Preliminary datasheet
V3.0	2015-01-20	Final datasheet
V3.1	2018-01-15	Final datasheet
n/a	2020-09-01	Datasheet migrated to a new system with a new layout and new revision number schema: target or preliminary datasheet = 0.xy; final datasheet = 1.xy
1.10	2022-04-12	Final datasheet

#### Trademarks

All referenced product or service names and trademarks are the property of their respective owners.

**Edition 2022-04-12**

**Published by  
Infineon Technologies AG  
81726 Munich, Germany**

**© 2022 Infineon Technologies AG  
All Rights Reserved.**

**Do you have a question about any  
aspect of this document?  
Email: [erratum@infineon.com](mailto:erratum@infineon.com)**

**Document reference  
IFX-AAX148-006**

#### IMPORTANT NOTICE

The information given in this document shall in no event be regarded as a guarantee of conditions or characteristics ("Beschaffenhheitsgarantie").

With respect to any examples, hints or any typical values stated herein and/or any information regarding the application of the product, Infineon Technologies hereby disclaims any and all warranties and liabilities of any kind, including without limitation warranties of non-infringement of intellectual property rights of any third party.

In addition, any information given in this document is subject to customer's compliance with its obligations stated in this document and any applicable legal requirements, norms and standards concerning customer's products and any use of the product of Infineon Technologies in customer's applications.

The data contained in this document is exclusively intended for technically trained staff. It is the responsibility of customer's technical departments to evaluate the suitability of the product for the intended application and the completeness of the product information given in this document with respect to such application.

#### WARNINGS

Due to technical requirements products may contain dangerous substances. For information on the types in question please contact your nearest Infineon Technologies office.

Except as otherwise explicitly approved by Infineon Technologies in a written document signed by authorized representatives of Infineon Technologies, Infineon Technologies' products may not be used in any applications where a failure of the product or any consequences of the use thereof can reasonably be expected to result in personal injury.