


25009708	<b>DATA SHEET</b>	
Valid from: 28.03.2019	<b>EPIC<sup>®</sup> SIGNAL M23 KIT A3 17 PIN SOLDER TERMINATION</b>	

## Description

- Circular connector for servo cables and encoders
- Low-resistance screen contact
- Optimum EMC protection
- Use of high quality materials for increased reliability
- Complete connector with housing and insulation body, equipped with suitable solder contacts



## Components of the combination

Article number of the combination	25009708
Housing	SIGNAL M23 A3 (24420055)
Insert	17 Pin (E-Part) with solder termination (73028500)

## General characteristics

Series	SIGNAL M23
Type	A3, Angled panel mounted
Version	Male
Connection type	Solder termination
Coding	Black (N)
Pin-arrangement	17 (E-Part)
Contact diameter	1 mm
Termination cross section	Up to 1 mm <sup>2</sup>
Clamping range	7,0 mm – 13,5 mm
Degree of protection	IP 65 (latched)
Cycles of mechanical operation	100
Temperature range	-25 °C to +125 °C

## Materials and surfaces


Housing, base material	Zinc die-cast
Housing, surface	Blue chromated (CrVI free)
Sealing	FPM/FKM
Insert	PA
Contact, base material	Brass
Contact, surface	Gold

## Electrical characteristics

Rated voltage	50 V
Rated impulse voltage	0,8 kV
Rated current	7 A
Contact resistance	< 4 mOhm
Verschmutzungsgrad	3

AbN  
automation

Creator: STKU3/PDP Released: IVSE1/PDP	Document: DB25009708EN Version: 02	Page 1 of 3
---	---------------------------------------	-------------

25009708	<b>DATA SHEET</b>	
Valid from: 28.03.2019	<b>EPIC<sup>®</sup> SIGNAL M23 KIT A3 17 PIN SOLDER TERMINATION</b>	

## Approvals

UL File Number

E249137



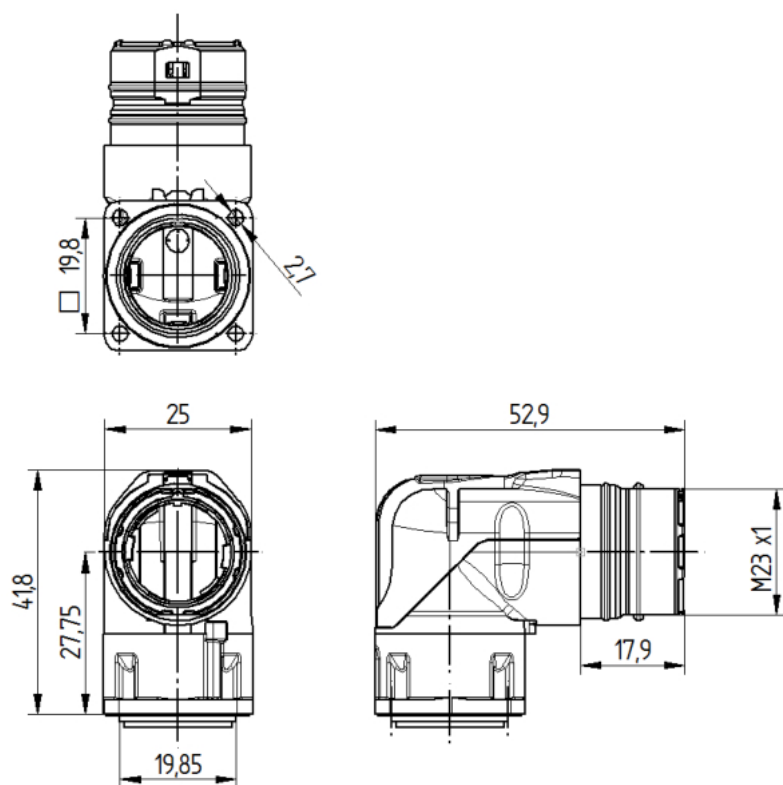
## Standards

Safety Standard

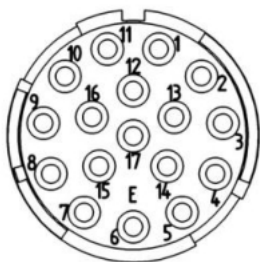
IEC 61984; UL 1977; UL 2238; CSA 22.2 182.3


## Technical Drawings

Housing



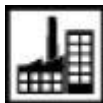
Insert



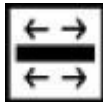
25009708	<b>DATA SHEET</b>	
Valid from: 28.03.2019	<b>EPIC<sup>®</sup> SIGNAL M23 KIT A3 17 PIN SOLDER TERMINATION</b>	



Good chemical resistance



Industrial machinery and plant engineering



Optimum strain relief



Mechanical resistance



Assembly time



Robust



Integrated SKINTOP<sup>®</sup> cable gland



Wind energy



Variety of approval certifications

### Info

Robust metal connector with integrated EMC cable gland

### Application range

Plant engineering

Servo drives and Servo assemblies

Measurement and control technology

Apparatus construction

### Remark

Photographs are not to scale and do not represent detailed images of the respective products.

AbN  
automation

Creator: STKU3/PDP Released: IVSE1/PDP	Document: DB25009708EN Version: 02	Page 3 of 3
---	---------------------------------------	-------------