

44420160	<b>DATA SHEET</b>	
Valid from: 17.09.2018	<b>EPIC® SIGNAL M23 17 E/P SOLDERING</b>	

## Description

- Inserts for M23 circular connectors
- Inserts with solder pins at the connection side for soldering in PCB boards.
- Ideal in combination with M23 housings of type B1/B2 for rear wall-mounting.



## General characteristics

Series	SIGNAL M23
Version	E-part = rotation to the right (clockwise) / P-part = rotation to the left (anticlockwise)
Number of contacts	17
Termination method	Solder termination; solder pins with Ø 1.0 mm for PCB soldering.
Temperature range	Pin length from rear edge of housing B1/B2: 4 mm -25 to +125 °C
Contacts included	ja

## Product variations

Article no.	Version	Contacts
44420160	P-Part	male contacts, PCB solder
44420161	P-Part	female contacts, PCB solder
44420162	E-Part	male contacts, PCB solder
44420163	E-Part	female contacts, PCB solder

## Mechanical characteristics

Cycles of mechanical operation	100
--------------------------------	-----

## Electrical characteristics

Rated voltage	50 V
Rated impulse voltage	0,8 kV
Rated current	7 A
Contact resistance	< 4 mOhm
Pollution degree	3

## Materials and surfaces

Insert	PA
Contacts, base material	brass
Contacts, surface	Au

## Standard

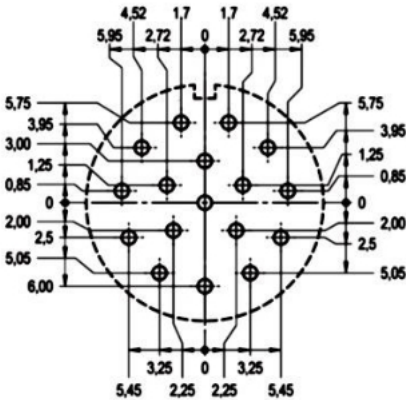
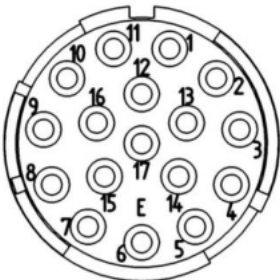
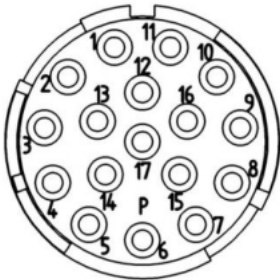
Safety Standard	IEC 61984
-----------------	-----------

AbN  
automation

Creator: MANA2/PDP Released: IVSE1/PDP	Document: DB44420160EN Version: 02	Page 1 of 3
---	---------------------------------------	-------------

44420160	<b>DATA SHEET</b>	
Valid from: 17.09.2018	<b>EPIC® SIGNAL M23 17 E/P SOLDERING</b>	

Drawings



44420160	<b>DATA SHEET</b>	
Valid from: 17.09.2018	<b>EPIC® SIGNAL M23 17 E/P SOLDERING</b>	



Good chemical resistance



Industrial machinery and plant engineering



Mechanical resistance



Assembly time



Robust



Wind Energy



Variety of approval certifications

### Info

With solder pins for PCB boards  
Only for housing type A1, B1, B2

### Application range

Plant engineering  
Measurement and control technology  
Apparatus construction

### Remark

The inserts are suitable for both male and female contacts. For a complete connection, you will need one P-component and one E-component. P-component = left turning (anticlockwise), E-component = right turning (clockwise)  
Photographs are not to scale and do not represent detailed images of the respective products.

AbN  
automation

Creator: MANA2/PDP Released: IVSE1/PDP	Document: DB44420160EN Version: 02	Page 3 of 3
---	---------------------------------------	-------------